

Helift

ALWAYS LIFTING ALWAYS GROWING

PT. HASTA KARYA ANANTA

Tel: +62 21-2986-0544, 45
Email: helift@hka.co.id
Website: www.helift.co.id

Add: Jl. Benteng Betawi, RT.001/RW.015,
Tanah Tinggi Kec. Tangerang, Kota Tangerang
Banten 15119, Indonesia



Helift

MATERIAL HANDLING EQUIPMENT

Table of Contents

COMPANY PROFILE	02
COUNTERBALANCE FORKLIFT TRUCK	03
COUNTERBALANCE THREE WHEEL FORKLIFT TRUCK	13
ELECTRIC ARTICULATED FORKLIFT.....	20
ELECTRIC REACH TRUCK.....	26
MULTI DIRECTIONAL REACH TRUCK.....	39
3-WAY PALLET STACKER.....	42
ELECTRIC ORDER PICKER.....	48
MAN-UP TURRET TRUCK.....	55
ELECTRIC PALLET STACKER	63
ELECTRIC PALLET TRUCK.....	78

COMPANY PROFILE

HELIFT - PT. HASTA KARYA ANANTA

HELIFT is a leading brand from PT Hasta Karya Ananta that focuses on providing high-quality Material Handling Equipment (MHE) solutions. We are here to answer the challenges of modern logistics and warehousing operations in Indonesia by providing units that are durable, efficient, and meet international safety standards.

Backed by experienced technicians and a commitment to after-sales service, Helift is not just a supplier of equipment, but a strategic partner in enhancing your business productivity.





**COUNTERBALANCE
FORKLIFT TRUCK
ALWAYS LIFTING ALWAYS GROWING**

Diesel Forklift 3-3,5t

MATERIAL HANDLING EQUIPMENT

MODEL	UNIT	CPCD30	CPCD35
Power Type		Diesel	Diesel
Rated Capacity	kg	3000	3500
Load Center	mm	500	500
Driving Mode		Sit-on Type	Sit-on Type
DIMENSIONS			
Max. Lifting Height	H	mm	3000
Mast Height	H1	mm	2070
Max. Fork Lifting Height	H2	mm	4220
Free Lift	H3	mm	30
Overall Height (Overhead Guard)	H4	mm	2090
Min. Ground Clearance	H5	mm	135
Seat to Overhead Guard	H6	mm	1000
Traction Coupling Height	H9	mm	310
Backrest Height(From The Fork Face)	H13	mm	1215
Overall Length (With/Without Fork)	W1	mm	3913/2693
Wheelbase	L4	mm	1700
Front Overhang	L2	mm	460
Rear Overhang	L3	mm	533
Overall Width	W1	mm	1225
Tread(Front/Rear)	W3/W2	mm	1000/970
Fork Distance (Outside) (Max/Min)	W5	mm	1060/244
Min. Turning Radius	r	mm	2390
Mast Tilt	a/b	(°)	6°/12°
Fork Size	L4	mm	45x122x1220
Tire Size		mm	28x9-15-14PR/6,50-10-10PR
PERFORMANCE			
Max Traveling Speeds (full load/unloaded)	km/h		18/19
Lifting Speed (full load/empty load)	mm/s		440/480
Lowering Speed (full load/empty load)	mm/s		440/430
Max. traction (full load)	mm/s		19,5/15,5
Max. Gradeability (full load/empty load)	%		15/20
Engine Model		Engine Mitsubishi S4S	Engine Mitsubishi S4S
Engine Rated Power	kw/rpm		36,8/2500
Engine Rated Torque	Nm/rpm		157/1800
Fuel Tank Capacity	L		50
WEIGHTS			
Total Weight	kg		4230

MODEL	UNIT	CPCD40	CPC50	
Power Type		Diesel	Diesel	
Rated Capacity	kg	4000	5000	
Load Center	mm	500	500	
Driving Mode		Sit-on Type	Sit-on Type	
DIMENSIONS				
Max. Lifting Height	H	mm	3000	3000
Mast Height	H1	mm	2150	2205
Max. Fork Lifting Height	H2	mm	4220	4225
Free Lift	H3	mm	30	50
Overall Height (Overhead Guard)	H4	mm	3003	2215
Min. Ground Clearance	H5	mm	148	175
Seat to Overhead Guard	H6	mm	1000	1000
Traction Coupling Height	H9	mm	323	390
Backrest Height(From The Fork Face)	H13	mm	1215	1950/1190
Overall Length (With/Without Fork)	W1	mm	4063/2843	4275/3055
Wheelbase	L4	mm	1850	1950
Front Overhang	L2	mm	460	460
Rear Overhang	L3	mm	533	533
Overall Width	W1	mm	1290	1380
Tread(Front/Rear)	W3/W2	mm	1000/970	1080/982
Fork Distance (Outside) (Max/Min)	W5	mm	1060/244	1260/250
Min. Turning Radius	r	mm	2550	3000
Mast Tilt	a/b	(°)	6°/12°	6°/12°
Fork Size	L4	mm	50×125×1220	50×125×1220
Tire Size		mm	250-15-14PR/6,50-10PR	300-15-16PR/7,00-12-12PR
PERFORMANCE				
Max Traveling Speeds (full load/unloaded)	km/h		19/19	22
Lifting Speed (full load/empty load)	mm/s		440/480	300/330
Lowering Speed (full load/empty load)	mm/s		440/430	330/300
Max. traction (full load)	mm/s		19,6/16,2	19,5
Max. Gradeability (full load/empty load)	%		15/20	15/15
Engine Model			Engine Mitsubhisi S4S	Engine Mitsubhisi S4S
Engine Rated Power	kw/rpm		37,3/2500	37,3/2500
Engine Rated Torque	Nm/rpm		177/1800	177/1800
Fuel Tank Capacity	L		50	50
WEIGHTS				
Total Weight	kg		4860	5600

Mast Forklift CPD30-40

Duplex Mast CPCD30-40													
Mast Model	Max. Fork Height	Load Capacity (Load Center 500mm/kg)				Mast Overall Height C (mm)			Mast Tilling Angel a/B (°)		Service Weight (kg)		
		CPCD30	CPCD35	CPCD40	CPCD40	3T	3.5T	4T	3T	3.5T	4T	CPCD30	CPCD35
M300	3000	3000	3500	4000	2070	2070	2165	6/12	4230	4530	4860		
M330	3300	3000	3500	4000	2220	2220	2315	6/12	4255	4555	4885		
M350	3500	3000	3500	3800	2320	2320	2415	6/12	4270	4570	4900		
M400	4000	2800	3150	3500	2520	2520	2715	6/6 (*6/12)	4360	4660	4990		
M450	4500	2500	3000	3200	2870	2870	2965	6/6 (*6/6)	4460	4700	5030		
M500	5000	*2250	*2800	*3150	3120	3120	3215	6/6 (*6/6)	4440	4740	5070		
M550	5500	*2100	*2500	*3000	3420	3420	3515	*3/6	4530	4830	5160		
M600	6000	*2050	*2300	*2800	3670	3670	3765	*3/6	4570	4870	5200		

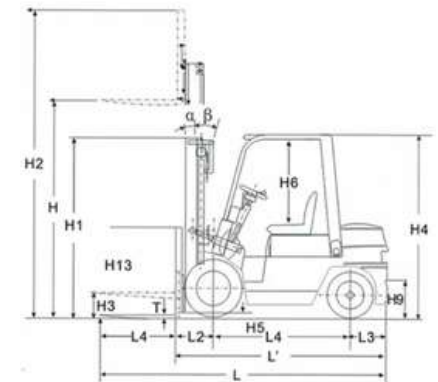
Duplex Free Lift Mast CPCD30-40																
Mast Model	Max. Fork Height	Load Capacity (Load Center 500mm/kg)				Mast Overall Height C (mm)			Free Lift (With Backrest) (mm)			Mast Tilling Angel a/B (°)		Service Weight (kg)		
		CPCD30	CPCD35	CPCD40	CPCD40	3T	3.5T	4T	3T	3.5T	4T	3T	3.5T	4T	CPCD30	CPCD35
ZM300	3000	3000	3500	4000	2070	2070	2165	870	870	870	6/12	4340	4660	4790		
ZM330	3300	3000	3500	4000	2220	2220	2315	990	990	990	6/12	4380	4680	4810		
ZM350	3500	3000	3500	3800	2320	2320	2415	1090	1090	1090	6/12	4400	4700	4830		
ZM400	4000	2800	3150	3500	2620	2620	2715	1390	1390	1390	6/6 (*6/12)	4500	4800	4930		
ZM450	4500	2500	3000	3200	2870	2870	2965	1640	1640	1640	6/6 (*6/6)	4550	4850	4980		
ZM500	5000	*2250	*2800	*3150	3120	3120	3215	1890	1890	1890	6/6 (*6/6)	4600	4900	5030		
ZM550	5500	*2100	*2500	*3000	3420	3420	3515	2190	2190	2190	*3/6	4700	5000	5130		
ZM600	6000	*2050	*2300	*2800	3670	3670	3765	2440	2440	2440	*3/6	4750	5050	5180		

Triplex Free Lift Mast CPCD30-40																
Mast Model	Max. Fork Height	Load Capacity (Load Center 500mm/kg)				Mast Overall Height C (mm)			Free Lift (With Backrest) (mm)			Mast Tilling Angel a/B (°)		Service Weight (kg)		
		CPCD30	CPCD35	CPCD40	CPCD40	3T	3.5T	4T	3T	3.5T	4T	3T	3.5T	4T	CPCD30	CPCD35
ZSM400	4000	2800	3150	3500	2070	2070	2085	870	870	870	6/6 (*6/12)	4470	4770	5070		
ZSM450	4500	2500	3000	3200	2220	2220	2235	1020	1020	1020	6/6 (*6/6)	4530	4830	5130		
ZSM480	4800	2350	2880	3170	2320	2320	2335	1103	1103	1103	6/6 (*6/6)	4625	4925	5225		
ZSM500	5000	*2250	*2800	*3150	2420	2420	2435	1220	1220	1220	6/6 (*6/6)	4690	4990	5290		
ZSM540	5400	*2100	*2500	*3000	2670	2670	2685	1470	1470	1470	*3/6	4720	5020	5320		
ZSM600	6000	*2050	*2300	*2800	2885	2885	2885	1670	1670	1670	*3/6	4750	5050	5350		



DETAILS

- High strength 20 manganese silicon steel door frame, with high tensile strength and enough toughness.
- In line with high pressure common rail environmental protection engine.
- Built-in noise isolating and sealing materials reduce vibration and noise effectively.
- The gas spring with automatic lock function ensures the safety during maintenance.
- The truck has lower vibration and noise.
- Patented new steering wheel double threaded.
- Adjustment mechanism, improve the operation comfort and adjustment reliability.
- Adjustment reliability, in line with the ergonomic design, making the driving more comfortable and convenient.



MODEL	UNIT	CPG/CPGD(Y)35
Power Type		Dual Fuel LPG
Rated Capacity	kg	3500
Load Center	mm	500
Driving Mode		Sit-on Type
DIMENSIONS		
Max. Lifting Height	H mm	3000
Mast Height	H1 mm	2070
Max. Fork Lifting Height	H2 mm	4220
Free Lift	H3 mm	30
Overall Height (Overhead Guard)	H4 mm	2090
Min. Ground Clearance	H5 mm	135
Seat to Overhead Guard	H6 mm	1000
Traction Coupling Height	H9 mm	310
Backrest Height(From The Fork Face)	H13 mm	1215
Overall Length (With/Without Fork)	W1 mm	3963/2743
Wheelbase	L4 mm	1760
Front Overhang	L2 mm	460
Rear Overhang	L3 mm	533
Overall Width	W1 mm	1225
Tread(Front/Rear)	W3/W2 mm	1000/970
Fork Distance (Outside) (Max/Min)	W5 mm	1060/244
Min. Turning Radius	r mm	2390
Mast Tilt	a/b (°)	6/12
Fork Size	L4 mm	45x122x1220
Tire Size	mm	28x9-15-14PR/6,50-10-10PR
PERFORMANCE		
Max Traveling Speeds (full load/unloaded)	km/h	18/19
Lifting Speed (full load/empty load)	mm/s	440/480
Lowering Speed (full load/empty load)	mm/s	440/430
Max. traction (full load)	mm/s	18,1/13,4
Max. Gradeability (full load/empty load)	%	15/20
Engine Model		Nisan K25
Engine Rated Power	kw/rpm	37,4/2600
Engine Rated Torque	Nm/rpm	176,5/1600
Fuel Tank Capacity	L	50
WEIGHTS		
Total Weight	kg	4530

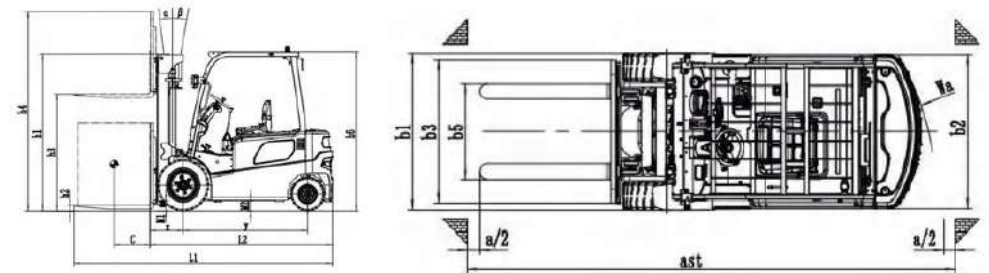
MODEL	UNIT	MK15	MK20	MK25
Power Type		Battery	Battery	Battery
Operating Type		Seated	Seated	Seated
Load Capacity	Q kg	1500	2000	2500
Load Center	C mm	500	500	500
Front Overhang	x mm	402	450	450
Wheelbase	y mm	1500	1650	1650
Service Weight (Incl. Battery)	kg	2900	3380	3820
WHEELS				
Tyre Type		Pneumatic	Pneumatic	Pneumatic
Tyre Size, Front		6,50x10-10PR	7,00-12-14PR	7,00-12-14PR
Tyre Size, Rear		16x6-8-10PR	18x7-8-14PR	18x7-8-14PR
Number Of Tyres, Front/Rear (X=Drive Wheel)		2X/2	2X/2	2X/2
Tread (Center Of Tyre), Front	b10 mm	950	970	970
Tread (Center Of Tyre), Rear	b11 mm	900	960	960
DIMENSIONS				
Mast/Fork Tilt Angel Front/Rear	a/B (°)	6/10	6/10	6/10
Mast Close Height	h1 mm	Prefer To The Mast Specification		
Free Lift Height	h2 mm	145	150	150
Lift Height	h3 mm	3000	3000	3000
Mast Extended Height (With Load Backrest)	h4 mm	Prefer To The Mast Specification		
Overhead Guard Height	h6 mm	2125	2150	2150
Seaf SIP Point Ground Clearance	h7 mm	1100	1130	1130
Height Of Traction Pin From Guard	h10 mm	260	250	250
Overall Length	l1 mm	3297	3500	3500
Length To Fork Face	l2 mm	2227	2430	2430
Overall Width	b1/b2 mm	1120	1160/1140	1160/1140
Fork Size	l/e/s mm	1070/100/35	1070/122/40	1070/122/40
Installation Level		2A	2A	2A
Fork Carriage Width	b3 mm	1040	1040	1040
Fork Outside Width	b5 mm	1040~200	1040~244	1040~244
Ground Clearance At Mast, Loaded	m1 mm	100	120	120
Ground Clearance At Center Of Wheelbase, Loaded	m2 mm	110	125	125
Min. Stacking Aisle Width For Pallet 1000*1200mm	mm	3595	3754	3754
Min. Stacking Aisle Width For Pallet 800*1200mm	mm	3790	3950	3950
Turning Radius	Wa mm	1940	2100	2100
PERFORMANCE				
Traveling Speed, Load/Unload	km/h	12/13	12/13	12/13
Lift Speed, Load/Unload	mm/s	335/400	260/400	260/400
Lowering Speed, Load/Unload	mm/s	400/400	400/400	400/400
Max. Traction, Load/Unload	N	9500	11000	110000
Gradeability, Load/Unload (S2=2min)	%	12/13	12/13	12/13
Service Brake		Hydraulic	Hydraulic	Hydraulic
Parking Brake		Mechanical	Mechanical	Mechanical
MOTOR				
Drive Motor Rating (S2=60min)	kw	4 (AC)	4 (AC)	4 (AC)
Lift Motor Rating (S3=15%)	kw	10.6 (AC)	12 (AC)	12 (AC)
Lead-Acid Battery	V/Ah	48/400	48/500	48/500
Battery Weight	kg	700	820	820
Hydraulic System Pressure		21,5	21,5	21,5

MODEL	UNIT	MK30	MK35	MK40S
Power Type		Battery	Battery	Battery
Operating Type		Seated	Seated	Seated
Load Capacity	Q kg	3000	3500	4000
Load Center	C mm	500	500	500
Front Overhang	x mm	462	462	467
Wheelbase	y mm	1750	1750	1760
Service Weight (Incl. Battery)	kg	4789	5136	5644
WHEELS				
Tyre Type		Pneumatic	Pneumatic	Solid Rubber
Tyre Size, Front		28x9/15-41PR	28x9/15-41PR	28x9/15
Tyre Size, Rear		18x7-8-14PR	18x7-8-14PR	18x7-84
Number Of Tyres, Front/Rear (X=Drive Wheel)		2X/2	2X/2	2X/2
Tread (Center Of Tyre), Front	b10 mm	1040	1040	1040
Tread (Center Of Tyre), Rear	b11 mm	990	990	990
DIMENSIONS				
Mast/Fork Tilt Angel Front/Rear	a/B (°)	6/10	6/10	6/10
Mast Close Height	h1 mm	Prefer To The Mast Specification		
Free Lift Height	h2 mm	155	160	160
Lift Height	h3 mm	3000	3000	3000
Mast Extended Height (With Load Backrest)	h4 mm	Prefer To The Mast Specification		
Overhead Guard Height	h6 mm	2180	2180	2180
Seaf SIP Point Ground Clearance	h7 mm	1135	1135	1135
Height Of Traction Pin From Guard	h10 mm	330	330	330
Overall Length	l1 mm	3617	3622	3622
Length To Fork Face	l2 mm	2547	2552	2552
Overall Width	b1/b2 mm	1260/1240	1260/1240	1260/1240
Fork Size	l/e/s mm	1070/125/45	1070/125/50	1070/125/50
Installation Level		3A	3A	3A
Fork Carriage Width	b3 mm	1100	1100	1100
Fork Outside Width	b5 mm	1060~250	1060~250	1060~250
Ground Clearance At Mast, Loaded	m1 mm	130	130	130
Ground Clearance At Center Of Wheelbase, Loaded	m2 mm	135	135	135
Min. Stacking Aisle Width For Pallet 1000*1200mm		3884	3889	3889
Min. Stacking Aisle Width For Pallet 800*1200mm		4082	4087	4087
Turning Radius	Wa mm	2220	2220	2220
PERFORMANCE				
Traveling Speed, Load/Unload	km/h	12/13	12/13	12/13
Lift Speed, Load/Unload	mm/s	260/400	260/400	250/400
Lowering Speed, Load/Unload	mm/s	400/400	400/400	400/400
Max. Traction, Load/Unload	N	16000	16000	16000
Gradeability, Load/Unload (S2-2min)	%	12/13	12/13	10/13
Service Brake		Hydraulic	Hydraulic	Hydraulic
Parking Brake		Mechanical	Mechanical	Mechanical
MOTOR				
Drive Motor Rating (S2=60min)	kw	4 (AC)	4 (AC)	15 (AC)
Lift Motor Rating (S3=15%)	kw	10.6 (AC)	12 (AC)	16 (AC)
Lead-Acid Battery	V/Ah	80/400	80/400	80/400
Battery Weight	kg	1120	1120	1120
Hydraulic System Pressure		21,5	21,5	21,5

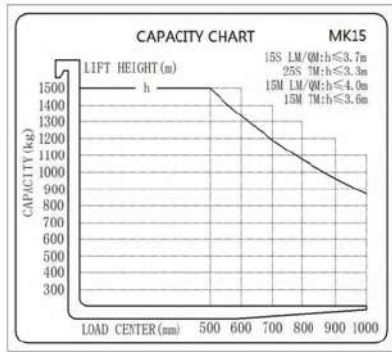


DETAILS

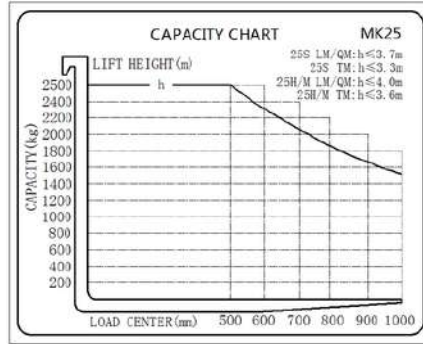
- Scient Ergonomically designed steering wheel and the seat ajustable front and rear, providing the operator with the best driving position.
- The wide field of vision mast design, witch is not easy to block the line of sight.
- Equipped with an active driver presence safety monitoring OPS system, the operation safety is effectively improved.
- The function such as reverse braking and anti-slipping on slopes, making it safe and reliable.
- The AC motor is maintenance-free, with no maintenance costs such as replacing carbon brushes.
- The AC power system has high efficiency, complete protection functions, build-it speed sensor, temperature sensor, high reliability and long life.
- The battery is designed with side access, making it easy to replace and maintain the battery.



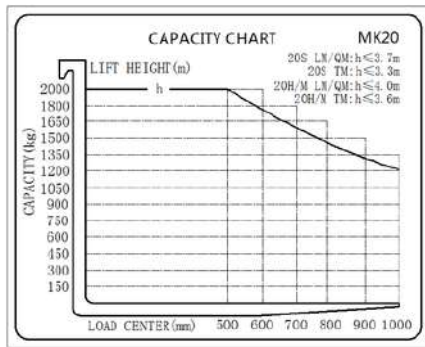
Capacity Chart Electric Forklift MK15-40



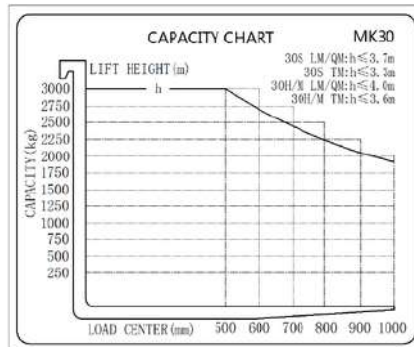
MK15



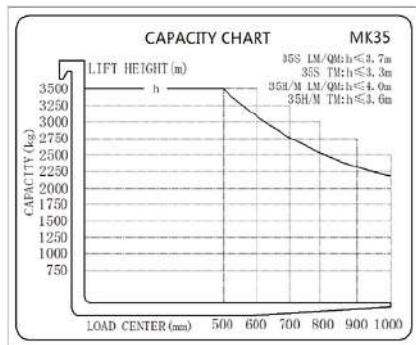
MK25



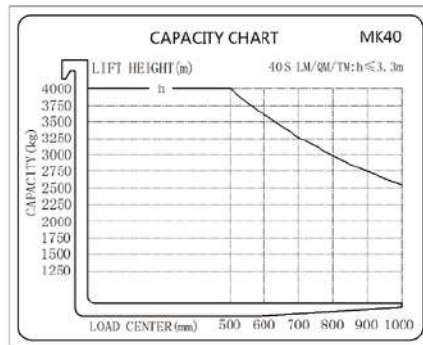
MK20



MK30



MK35



MK40

Mast Electric Forklift MK15-40

Duplex Mast	MK15								
Mast Model	30L	33L	35L	37L	40L	45L	50L	55L	60L
Lifting Height	mm 3000	3300	3500	3700	4000	4500	5000	5500	6000
Mast Close Height	mm 2010	2160	2260	2360	2560	2810	3060	3360	3610
Mast Extended Height	mm 4060	4360	4560	4760	5060	5560	6060	6560	7060
Free Lifting Height (With Load Backrest)	mm 145	145	145	145	145	145	145	145	145

Duplex Free Lift Mast	MK15								
Mast Model	30Q	33Q	35Q	37Q	40Q	45Q	50Q	55Q	60Q
Lifting Height	mm 3000	3300	3500	3700	4000	4500	5000	5500	6000
Mast Close Height	mm 2010	2160	2260	2360	2560	2810	3060	3360	3610
Mast Extended Height	mm 4060	4360	4560	4760	5060	5560	6060	6560	7060
Free Lifting Height (With Load Backrest)	mm 945	1095	1195	1295	1495	1745	1995	2295	2545

Duplex Mast	MK15											
Mast Model	36T	40T	45T	47T	48T	50T	55T	60T	63T	65T	68T	70T
Lifting Height	mm 3600	4000	4500	4700	4800	5000	5500	6000	6300	6500	6800	7000
Mast Close Height	mm 1810	1943	2110	2177	2210	2277	2443	2610	2710	2777	2877	2943
Mast Extended Height	mm 4660	5060	5560	5760	5860	6060	6560	7060	7360	7560	7860	8060
Free Lifting Height (With Load Backrest)	mm 745	878	1045	1112	1145	1212	1378	1545	1645	1712	1812	1878

Duplex Mast	MK20-25								
Mast Model	30L	33L	35L	37L	40L	45L	50L	55L	60L
Lifting Height	mm 3000	3300	3500	3700	4000	4500	5000	5500	6000
Mast Close Height	mm 2030	2180	2280	2380	2580	2830	3080	3380	3630
Mast Extended Height	mm 4060	4360	4560	4760	5060	5560	6060	6560	7060
Free Lifting Height (With Load Backrest)	mm 150	150	150	150	150	150	150	150	150

Duplex Free Lift Mast	MK20-25								
Mast Model	30Q	33Q	35Q	37Q	40Q	45Q	50Q	55Q	60Q
Lifting Height	mm 3000	3300	3500	3700	4000	4500	5000	5500	6000
Mast Close Height	mm 2030	2180	2280	2380	2580	2830	3080	3380	3630
Mast Extended Height	mm 4199	4499	4699	4899	5199	5699	6199	6699	7199
Free Lifting Height (With Load Backrest)	mm 960	1110	1210	1310	1510	1760	2010	2310	2560

Duplex Mast	MK20-25											
Mast Model	36T	40T	45T	47T	48T	50T	55T	60T	63T	65T	68T	70T
Lifting Height	mm 3600	4000	4500	4700	4800	5000	5500	6000	6300	6500	6800	7000
Mast Close Height	mm 1830	1963	2130	2197	2230	2297	2463	2630	2730	2797	2897	2963
Mast Extended Height	mm 4660	5060	5560	5760	5860	6060	6560	7060	7360	7560	7860	8060
Free Lifting Height (With Load Backrest)	mm 760	893	1060	1127	1160	1227	1393	1560	1660	1727	1827	1893

Duplex Mast	MK30-35-40								
Mast Model	30L	33L	35L	37L	40L	45L	50L	55L	60L
Lifting Height	mm 3000	3300	3500	3700	4000	4500	5000	5500	6000
Mast Close Height	mm 2145	2295	2395	2495	2695	2945	3195	3495	3745
Mast Extended Height	mm 4190	4490	4690	4890	5190	5940	6190	6690	7190
Free Lifting Height (With Load Backrest) MK30	mm 155	155	155	155	155	155	155	155	155
Free Lifting Height (With Load Backrest) MK35-40	mm 160	160	160	160	160	160	160	160	160

Duplex Free Lift Mast	MK30-35-40								
Mast Model	30Q	33Q	35Q	37Q	40Q	45Q	50Q	55Q	60Q
Lifting Height	mm 3000	3300	3500	3700	4000	4500	5000	5500	6000
Mast Close Height	mm 2145	2295	2395	2495	2695	2945	3195	3495	3745
Mast Extended Height	mm 4199	4499	4699	4899	5199	5699	6199	6699	7199
Free Lifting Height (With Load Backrest) MK30	mm 940	1090	1190	1290	1490	1740	1990	2290	2540
Free Lifting Height (With Load Backrest) MK35-40	mm 945	1095	1195	1295	1495	1745	1995	2295	2545

Duplex Mast	MK30-35-40											
Mast Model	36T	40T	45T	47T	48T	50T	55T	60T	63T	65T	68T	70T
Lifting Height	mm 3600	4000	4500	4700	4800	5000	5500	6000	6300	6500	6800	7000
Mast Close Height	mm 1875	2008	2175	2242	2275	2342	2508	2675	2775	2842	2942	3008
Mast Extended Height	mm 4790	5190	5690	5890	5990	6190	6690	7190	7490	7690	7990	8190
Free Lifting Height (With Load Backrest) MK30	mm 670	803	970	1037	1070	1137	1303	1470	1570	1637	1737	1803
Free Lifting Height (With Load Backrest) MK35-40	mm 675	808	975	1042	1075	1142	1308	1475	1575	1642	1742	1808

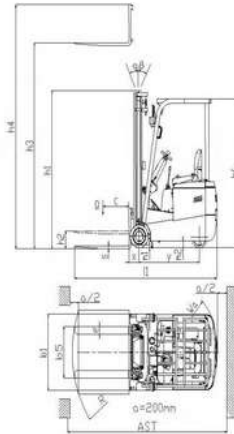
3 Wheel Electric Forklift 1-1,5t

MATERIAL HANDLING EQUIPMENT



COUNTERBALANCE THREE WHEELS FORKLIFT TRUCK
ALWAYS LIFTING ALWAYS GROWING

MODEL	UNIT	TKA10	TKA15	TKA15F09
Power Type		Battery	Battery	Battery
Operation		Seated	Seated	Seated
Load Capacity	Q kg	1000	1500	1500
Load Center Distance	C mm	500	500	500
Front Overhang	x mm	168	168	175
Wheelbase	y mm	975-990-1020	1127-1142-1172	996-1018-1060
WEIGHTS				
Service Weight (Inc. Battery)	kg	1700	1990	2250
Axle Loading, Load Rear/Front	kg	335/2365	390/3170	350/3400
Axle Loading, Unload Front/Rear	kg	1045/655	1250/750	1450/800
WHEELS				
Tyre Type, Front/Rear		Solid PU	Solid PU	Solid PU
Tyre Size, Front	mm	2859x100	285x100	305x140
Tyre Size, Rear	mm	230x110	280x135	280x135
Wheels, Number Front/Rear (X=Driven)		2 / 1X	/	2 / 1X
Track Width, Front	b10 mm	/	2 / 1X	/
Track Width, Rear	b11 mm	804	804	870
DIMENSIONS				
Mast/Fork Tilt Angel Front/Rear	a/B (°)	2/4	2/4	2/4
Mast Retracted Height	h1 mm	1995	1995	2065
Free Lift Height	h2 mm	90	90	/
Lift Height	h3 mm	3000	3000	3000
Mast Extended Height (With Backrest)	h4 mm	3530	3530	3560
Overhead Guard Height	h6 mm	1965	1965	1965
Seat Height	h7 mm	930	930	930
Overall Length	L1 mm	2330	2496	2415
Body To Fork Surface Length	L2 mm	1410	1576	1495
Overall Width	b1/b2 mm	912	912	1010
Fork Dimensions	l/e/s mm	920/100/35	920/100/35	920/100/35
Installation Level		2A	2A	2A
Fork Carriage Width	b3 mm	620	620	680
Fork Outside Spread	b5 mm	220-620	220-620	220-680
Ground Clearance Below Mast	m1 mm	90	90	80
Ground Clearance, Body	m2 mm	90	90	90
Aisle Width For Pallet 1000*1200mm C=500mm	Ast mm	2760	2925	2845
Aisle Width For Pallet 800*1200mm C=600mm	Ast mm	2870	3034	2960
Turning Radius	Wa mm	1255	1415	1325
PERFORMANCE				
Traveling Speed, Load/Unload	km/h	6/7	6/7	6/7
Lift Speed, Load/Unload	m/s	150/190	125/250	125/250
Lowering Speed, Load/Unload	m/s	350/250	350/250	350/300
Gradeability, Load/Unload	%	8/10	8/10	8/10
Service Brake		Hydraulic	Hydraulic	Hydraulic
MOTOR				
Drive Motor Rating (S2=60min)	kw	1,5	2,3	2,3
Lift Motor Rating (S3=15%)	kw	2	3	3,5
Battery Voltage/Nominal Capacity	V/Ah	24/300	24/350	24/480
Battery Weight	kg	277	290	370
Steering System		EPS	EPS	EPS



DETAILS

- EPS steering with a compact wheel diameter ensures effortless and efficient maneuverability.
- Small size high-strength PU drive wheel with small front overhang.
- A multi-way valve comes standard, offering precise control over lifting and tilting.
- Wide view mast offers effortless operation and clear observation.
- Comfortable seating designed to alleviate work fatigue.
- Front wheel dual-drive motor, Maintenance-free double AC motors Quicker response, Stronger power, Longer service life.

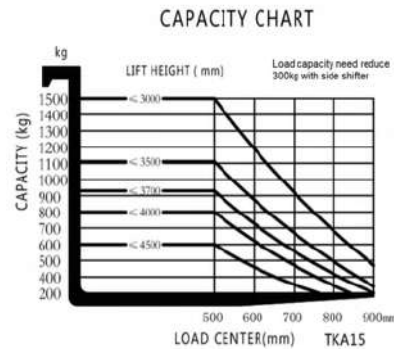
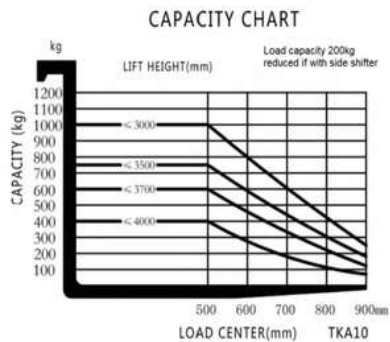
Capacity Chard 3 Wheel Electric Forklift TKA10-15

Mast Three Wheel Electric Forklift TKA10-15

Duplex Mast	TKA	10-25	10-27	10-30	10-33	10-35	10-37	10-40
Lifting Height	h3	mm 2500	2700	3000	3300	3500	3700	4000
Mast Extended Height	h4	mm 3030	3230	3530	3830	4030	4230	4530
Mast Retracted Height	h1	kg 1745	1845	1995	2145	2245	2345	2545
Free Lift Height	h2	mm 110	110	110	110	110	110	110

Duplex Mast	TKA	15-25	15-27	15-30	15-33	15-35	15-37	15-40	15-45
Lifting Height	h3	mm 2500	2700	3000	3300	3500	3700	4000	4500
Mast Extended Height	h4	mm 3060	3260	3560	2860	4060	4260	4610	5110
Mast Retracted Height	h1	kg 1815	1915	2065	2215	2315	2415	2615	2865
Free Lift Height	h2	mm /	/	/	/	/	/	/	/

Triplex Mast	TKA	15-45
Lifting Height	h3	mm 4500
Mast Extended Height	h4	mm 5180
Mast Retracted Height	h1	kg 2100
Free Lift Height	h2	mm /



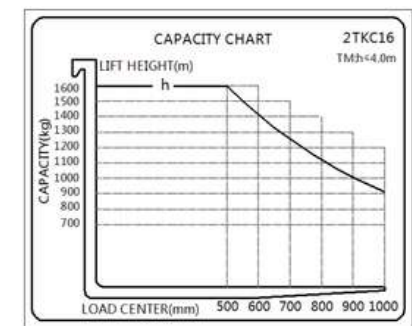
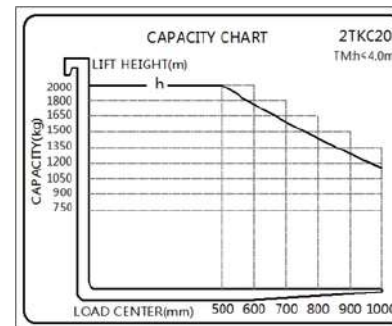
MODEL	UNIT	2TKC16	2TKC20
Power Type		Battery	Battery
Operation		Seated	Seated
Load Capacity	Q kg	1600	2000
Load Center Distance	C mm	500	500
Front Overhang	x mm	365	370
Wheelbase	y mm	1400	1400
WEIGHTS			
Service Weight (Incl/Excl. Battery)	kg	3290/2640	3420/2650
Axle loading, Load, Front/Rear	kg	4105/785	4851/579
Axle Loading, Unloading, Front/Rear	kg	1514/1776	1605/1825
WHEELS			
Tyre Type, Front/Rear		Solid Tyre	Solid Tyre
Tyre Size, Front		457×152×308	457×178×308
Tyre Size, Rear		381×127×286	381×127×286
Wheels, Number Front/Rear (X=Driven)		2X/2	2X/2
DIMENSIONS			
Mast/Fork Tilt Angel Front/Rear	a/B (°)	6/6	6/6
Free Lift Height	h2 mm	145	150
Lift Height	h3 mm	3300	3300
Overhead Guard Height	h6 mm	2105	2105
Seat Height	h7 mm	1062	1062
Towing Pin Height	h10 mm	519	519
Overall Length	L1 mm	2880	2885
Body To Fork Surface Height	L2 mm	1960	1965
Overall Width	b1/b2 mm	1086/1070	1120/1070
Fork Dimesions	l/e/s mm	920/100/35	920/100/40
Installation Level (IS02328)		2A	2A
Fork Carriage Width	b3 mm	970	970
Fork Outside Spread (Max~Min)	b5 mm	930~218	930~218
Ground Clearance (Loaded, Center of Mast)	m1 mm	105	105
Ground Clearance (Loaded, Center of Wheelbase)	m2 mm	100	100
Aisle Width (1000×1200 Across Forks)	Ast mm	3286	3291
Aisle Width (800×1200 Along Forks)	Ast mm	3410	3415
Turning Radius	Wa mm	1595	1595
PERFORMANCE			
Traveling Speed, Load/Unload	km/h	15/15	14/15
Lift Speed, Load/Unload	mm/s	400/550	360/550
Lowering Speed, Load/Unload	mm/s	500/550	500/550
Gradeability, Load/Unload	%	20/30	18/28
Service Brake		Hydraulic	Hydraulic
Parking Brake		Mechanical	Mechanical
MOTOR			
Drive Motor, Rating S2=60	kw	AC4.8×2	AC4.8×2
Lift Motor Rating S3=15%	kw	AC12	AC12
Lead-acid Battery Voltage/Nominal Capacity (standard)	kw	48/400	48/490
Lead acid battery weight (standard)	V/Ah	650	770



DETAILS

- With ergonomic design, the adjustable steering wheel and seat ensure the operator's optimal driving comfort.
- Intelligent imported control technology ensures consistently high performance with low consumption.
- Three-wheel structure, In situ rotation more flexible.
- Front wheel dual-drive motor, Maintenance-free double AC motors Quicker response, Stronger power, Longer service life.
- Wide-view mast design ensures easy operation, better observation, and enhanced work efficiency.
- Equipped with solid rubber tires for enhanced road adaptability, ideal for both indoor and outdoor use.

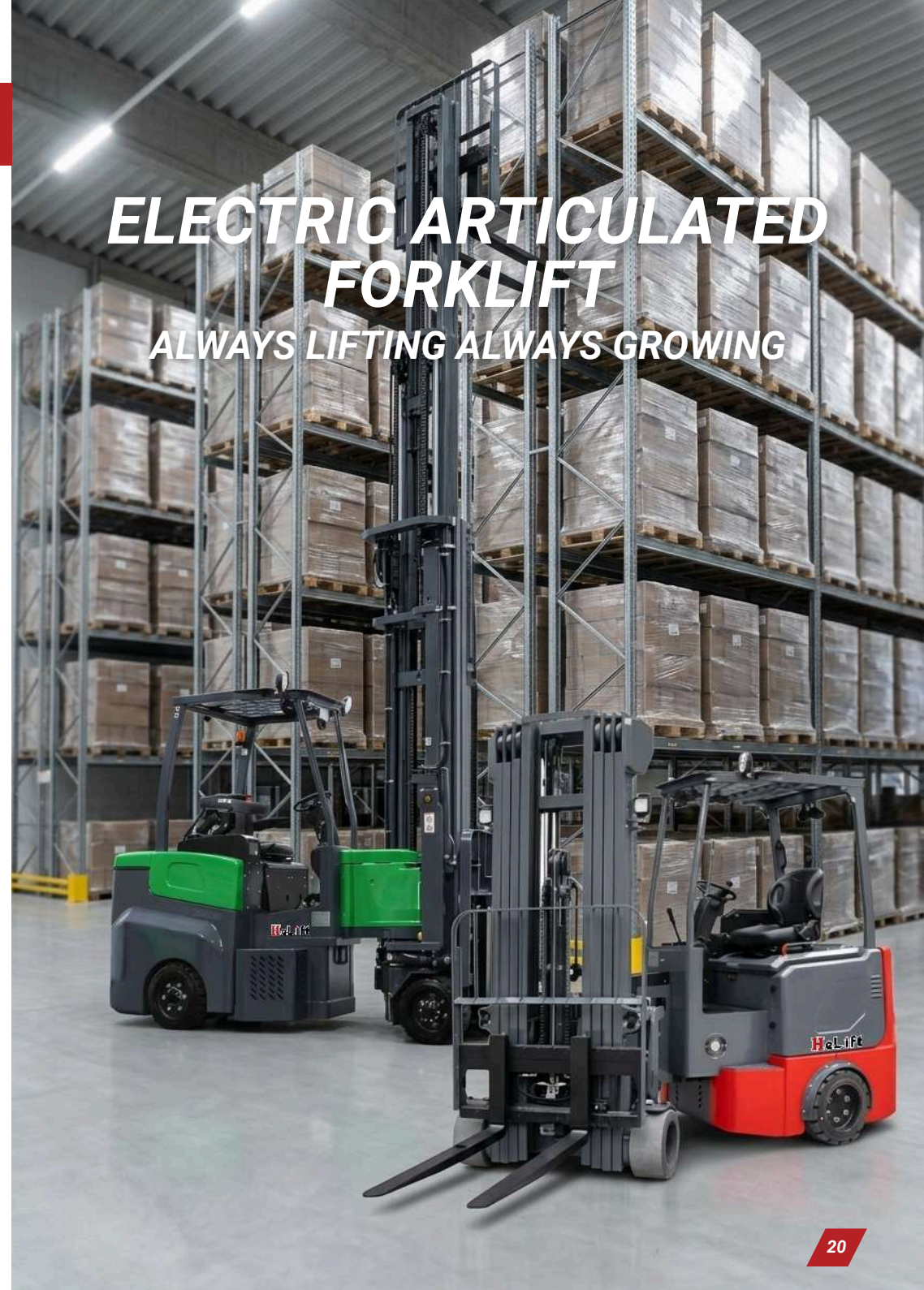
Capacity Chard 3 Wheel Electric Forklift 2TKC16-20



Mast Three Wheel Electric Forklift 2TKC16-20

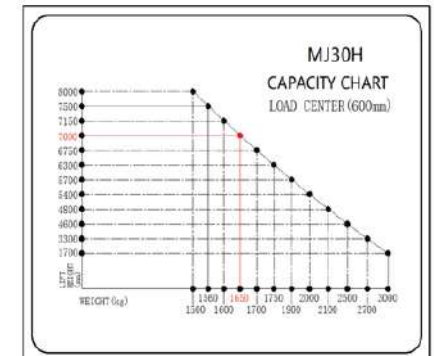
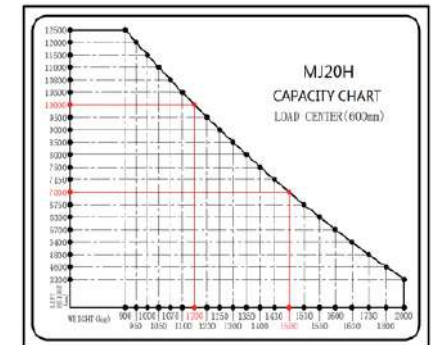
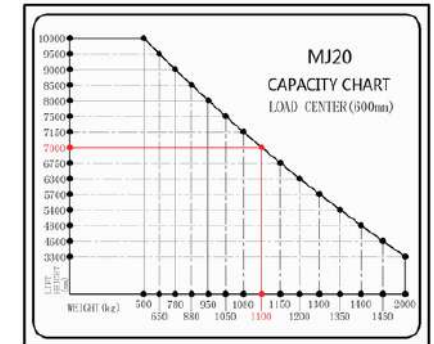
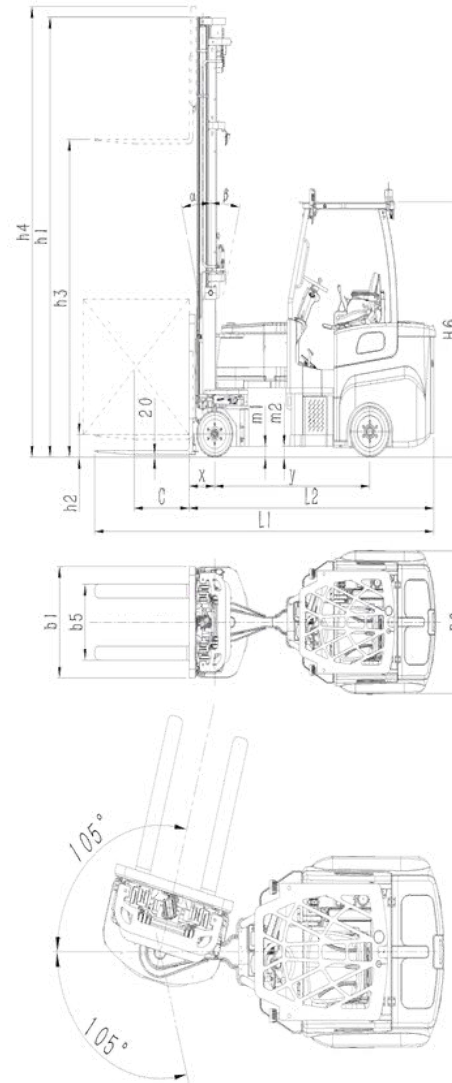
Mastmodel	Lifting Height	Mast Retracted Height	Mast Extended Height	Free Lifting Height (With Standard Load Backrest)		Service Weight (Incl. Battery)		Mast Tilt Angle
				mm	mm	±3% kg	kg	
Model 2TKC				16	20	16	20	All Series
75T	7500	3132	8511	2156	2161	3679	3809	2/4
72T	7200	3032	8211	2061	2061	3660	3790	2/4
70T	7000	2965	8011	1989	1994	3647	3777	2/4
68T	6800	2899	7811	1923	1928	3635	3765	2/4
65T	6500	2799	7511	1823	1828	3616	3746	2/4
63T	6300	2732	7311	1756	1761	3603	3733	2/4
60T	6000	2632	7011	1656	1661	3584	3714	2/4
55T	5500	2465	6511	1489	1494	3553	3683	2/4
50T	5000	2299	6011	1323	1328	3522	3652	4/6
48T	4800	2232	5811	1256	1261	3509	3639	4/6
45T	4500	2132	5511	1156	1161	3490	3620	4/6
40T	4000	1965	5011	989	994	3458	3588	4/6
36T	3600	1832	4611	856	861	3433	3563	4/6

ELECTRIC ARTICULATED FORKLIFT
ALWAYS LIFTING ALWAYS GROWING



MODEL	UNIT	MJ20 Narrow Body	MJ20 Wide Body	MJ30 Wide Body	MJD25
Power Type		Battery	Battery	Battery	Battery
Operation		Seated	Seated	Seated	Seated
Load Capacity	Q kg	2000	2000	3000	2500
Load Center Distance	C mm	600	600	600	600
Front Overhang	x mm	285	285	285	285
Wheelbase	y mm	1720	1720	1720	1720
WEIGHTS					
Service Weight (Inc. Battery)	kg	7460	8140	8280	8060
Axle Loading, Load Rear/Front	kg	5290/4250	5600/4650	6830/4450	5460/5220
Axle Loading, Unload Front/Rear	kg	2250/5210	2470/5670	2430/5850	1710/6380
WHEELS					
Tyre Type, Front/Rear		Solid Tyre	Solid Tyre	Solid Tyre	PU/Solid Tyre
Tyre Size, Front	mm	2x413x178	2x413x178	2x413x178	365x200
Tyre Size, Rear	mm	2x457x178	2x457x229	2x457x229	18x9x12,125
Wheels, Number Front/Rear (X=Driven)		2X/2	2X/2	2X/2	2X/2
Track Width, Front	b10 mm	800	800	800	1095
Track Width, Rear	b11 mm	1090	1220	1370	1190
DIMENSIONS					
Mast/Fork Tilt Angel Front/Rear	α/β (°)	1/3	1/3	1/3	1/3 or 3/3
Mast Rotation Angel	(°)	210	210	210	180
Mast Retracted Height	h1 mm	Refer to the mast specification			2220-2795
Free Lift Height	h2 mm	Refer to the mast specification			1070-1645
Rated Lift Height	mm	3300	3300	1700	3300
Lift Height	h3 mm	4600~10000	4600~12500	4600~8000	6000~8000
Mast Extended Height	h4 mm	Refer to the mast specification			7196-9195
Overhead Guard Height	h6 mm	2250	2250	2250	2260
Seat SIP Point Ground Clearance	h7 mm	1230	1230	1230	1230
Overall Length	L1 mm	3830	3830	3830	4040
Body To Fork Surface Length	L2 mm	2730	2730	2730	2940
Overall Width	b1/b2 mm	980/1260	980/1400	980/1600	1295/1420
Fork Dimesions	s/e/l mm	50/100/1100	50/100/1100	45/125/1100	50/100/1100
Installation Level		II	II	III	2A
Fork Carriage Width	b3 mm	990	990	990	1100
Fork Outside Spread	b5 mm	250~890	250~890	380~890	220~1050
Side Shift Distance	mm	± 100	± 100	± 100	± 143
Ground Clearance (Load, Center of Mast)	m1 mm	50	50	50	70
Ground Clearance (Load, Center of Wheelbase)	m2 mm	100	100	100	110
Aisle Width (800x1200 Pallet)	mm	1900	2100	2300	2134
Efficiency Aisle Pallet To Pallet Distance \geq	mm	2000	2200	2500	/
Efficiency Aisle Pallet To Pallet Distance \geq	mm	2200	2400	2700	/
Other Stacking Aisle Width	mm				
Min. main aisle width (800x1200 Pallet)	mm	2650	2650	2750	1930 (1000x1200 Pallet)
Turning Radius	Wa mm	2200	2200	2200	2115
PERFORMANCE					
Traveling Speed, Load/Unload	km/h	12/13	12/13	12/13	12/13
Lift Speed, Load/Unload	m/s	400/420	400/420	300/400	300/400
Lowering Speed, Load/Unload	m/s	450/400	450/400	350/350	450/400
Max. Gradeability, Load/Unload	%	15/12	15/12	15/12	15/12
Service Brake		Hydraulic	Hydraulic	Hydraulic	Hydraulic
DRIVE					
Drive Motor Rating (S2=60min)	kw	16,3 (AC)	16,3 (AC)	16,3 (AC)	7,5x2 (AC)
Lift Motor Rating (S3=15%)	kw	15 (AC)	15 (AC)	21 (AC)	21 (AC)
Battery Voltage/Nominal Capacity	V/Ah	80/500	80/500	80/500	/
Battery Weight	kg	1380	1380	1380	660
Steering System		Hydraulic	Hydraulic	Hydraulic	Hydraulic

Measurement and Capacity Chard Electric Articulated Forklift MJ20-30



Stacking Aisle Parameter Table

		MJ20 Narrow Body										
		Pallet along fork dimensions (L)										Swing angle°
		mm	1000	1100	1200	1300	1400	1500	1600	1700	1800	
Pallet along fork dimensions (W)	800	/	/	1900	2050	2150	2250	/	/	/	±105	
	900	/	/	1950	2080	2180	2280	/	/	/		
	1000	1800	1900	2000	2100	2200	2300	2400	2500	2600		
	1100	1830	1930	2030	2130	2230	2330	2430	2530	2630		
	1200	1850	1950	2050	2150	2250	2350	2450	2550	2650		
	1300	1900	2000	2150	2200	2300	2400	2500	2600	2700	±100	
	1400	2000	2100	2200	2300	2400	2500	2600	2700	2800	±95	
	1500	2350	2450	2550	2650	2750	2850	2950	3050	3150	±90	
	1600	2400	2500	2600	2700	2800	2900	3000	3100	3200		



ELECTRIC REACH TRUCK
ALWAYS LIFTING ALWAYS GROWING

Stand-On Electric Reach Truck 1,2-1,5t MATERIAL HANDLING EQUIPMENT

MODEL	UNIT	MF12 (Duplex Mast)	MF12 (Triplex Full Free Mast)	MF15D (Duplex Mast)	MF15D (Triplex Full Free Mast)
Power Type		Battery	Battery	Battery	Battery
Operation Type		Stand On	Stand On	Stand On	Stand On
Rated Capacity	Q kg	1200	1200	1500	1500
Load Center	C mm	500	500	500	500
Front Overhang	x mm	140	140	140	140
Wheelbase	y mm	1270	1270	1345	1345
WEIGHTS					
Weight (Include Battery)	kg	2000	2250	2100	2350
Axle Capacity With No Load, Drive Side/Load Side	kg	/	/	/	/
Axle Capacity With Full Load When Fork Forward, Drive Side/Load Side	kg	/	/	/	/
Axle Capacity With Full Load When Fork Backward, Drive Side/Load Side	kg	/	/	/	/
WHEELS					
Wheel Type		PU	PU	PU	PU
Load Wheel	mm	210x85	210x85	210x85	210x85
Drive Wheel	mm	230x110	230x110	230x110	230x110
Auxiliary Wheel	mm	180x76	180x76	180x76	180x76
Number Of Wheel, Front/Rear(X=Drive Wheel)		2/1x+2	2/1x+2	2/1x+2	2/1x+2
Wheel Tread, Drive Side	b10 mm	615	615	615	615
Wheel Tread, Load Side	b11 mm	999	999	999	999
DIMENSIONS					
Fork Tilt	a/B (°)	3/5	3/5	3/5	3/5
Mast Close Height	h1 mm	2080	2080	2080	2080
Free Lift Height	h2 mm	/	1480	/	1480
Lift Height	h3 mm	3000	4500	3000	4500
Mast Extended Height With Load-Backrest	h4 mm	3960	5460	3960	5460
Overhead Guard Height	h5 mm	2250	2250	2250	2250
Stand Board Height	h6 mm	300	300	300	300
Overall Length	h7 mm	2078	2106	2078	2106
Overall Width	l1 mm	1090/1000	1090/1000	1090/1000	1090/1000
Fork Size	b1/b2 mm	1070/100/35	1070/100/35	1070/100/35	1070/100/35
Fork Carriage Width	l/e/s mm	1088	1088	1088	1088
Fork Outside Width	b3 mm	222-750	222-750	222-750	222-750
Inner Leg Width	b5 mm	822	822	822	822
Reach Stroke	b4 mm	600	570	690	660
Mast Ground Clearance	m1 mm	80	80	80	80
Aisel Width For Pallet 1000*1200mm(C=500mm)	Ast mm	2502	2521	2532	2550
Aisel Width For Pallet 800*1200mm(C=500mm)	Ast mm	2537	2561	2547	2571
Turning Radius	Wa mm	1492	1492	1580	1580
PERFORMANCE					
Driving Speed (Load/Unload)	km/h	6/7	6/7	6/7	6/7
Lifting Speed (Load/Unload)	mm/s	150/190	130/190	150/190	100/190
Lowering Speed (Load/Unload)	mm/s	190/170	170/130	190/170	170/130
Max. Gradeability (Load/Unload)(S2-5min)	%	10	10	10	10
Brake Type		Mechanical	Mechanical	Mechanical	Mechanical
DRIVING					
Driving Motor (S2-60min)	kw	2,3	2,3	2,3	2,3
Lifting Motor (S3-15%)	kw	3,5	3,5	3,5	3,5
Battery Voltage/Capacity	V/Ah	24/350	24/350	24/420	24/420
Battery Weight	kg	300	300	335	335
Steering System		EPS	EPS	EPS	EPS
OTHERS					
Battery Replacement Type		Side Pull	Side Pull	Side Pull	Side Pull

Stand-On Electric Reach Truck 1,5-2t MATERIAL HANDLING EQUIPMENT

MODEL	UNIT	MF15 (Duplex Mast)	MF15 (Triplex Full Free Mast)	MF20 (Duplex Mast)	MF20 (Triplex Full Free Mast)
Power Type		Battery	Battery	Battery	Battery
Operation Type		Stand On	Stand On	Stand On	Stand On
Rated Capacity	Q kg	1500	1500	2000	2000
Load Center	C mm	500	500	500	500
Front Overhang	x mm	180	180	180	180
Wheelbase	y mm	1345	1345	1545	1545
WEIGHTS					
Weight (Include Battery)	kg	2450	2850	2750	2950
Axle Capacity With No Load, Drive Side/Load Side	kg	/	/	/	/
Axle Capacity With Full Load When Fork Forward, Drive Side/Load Side	kg	/	/	/	/
Axle Capacity With Full Load When Fork Backward, Drive Side/Load Side	kg	/	/	/	/
WHEELS					
Wheel Type		PU	PU	PU	PU
Load Wheel	mm	254x104	254x104	254x104	254x104
Drive Wheel	mm	343x108	343x108	343x108	343x108
Auxiliary Wheel	mm	180x76	180x76	180x76	180x76
Number Of Wheel, Front/Rear(X=Drive Wheel)		2/1x+2	2/1x+2	2/1x+2	2/1x+2
Wheel Tread, Drive Side	b10 mm	680	680	680	680
Wheel Tread, Load Side	b11 mm	964	1064	1064	1064
DIMENSIONS					
Fork Tilt	a/B (°)	3/5	3/5	3/5	3/5
Mast Close Height	h1 mm	2084	2142	2082	2142
Free Lift Height	h2 mm	400	1542	80	1542
Lift Height	h3 mm	3000	4500	3000	4500
Mast Extended Height With Load-Backrest	h4 mm	3960	5460	3960	5460
Overhead Guard Height	h5 mm	2250	2250	2250	2250
Stand Board Height	h6 mm	300	300	300	300
Overall Length	h7 mm	2258	2283	2299	2336
Overall Width	l1 mm	1090	1090/1170	1090/1170	1090/1170
Fork Size	b1/b2 mm	1070/100/35	1070/100/35	1070/122/40	1070/122/40
Fork Carriage Width	l/e/s mm	1088	1088	1088	1088
Fork Outside Width	b3 mm	222-650	222-750	244-772	244-772
Inner Leg Width	b5 mm	750	856	856	856
Reach Stroke	b4 mm	550	525	717	677
Mast Ground Clearance	m1 mm	82	82	82	82
Aisel Width For Pallet 1000*1200mm(C=500mm)	Ast mm	2663	2681	2746	2769
Aisel Width For Pallet 800*1200mm(C=500mm)	Ast mm	2714	2737	2764	2796
Turning Radius	Wa mm	1594	1594	1784	1784
PERFORMANCE					
Driving Speed (Load/Unload)	km/h	9/10	9/10	9/10	9/10
Lifting Speed (Load/Unload)	mm/s	240/400	200/350	220/380	180/330
Lowering Speed (Load/Unload)	mm/s	300/270	320/280	310/260	290/240
Max. Gradeability (Load/Unload)(S2-5min)	%	10	10	10	10
Brake Type		Mechanical	Mechanical	Mechanical	Mechanical
DRIVING					
Driving Motor (S2-60min)	kw	4,5	4,5	4,5	4,5
Lifting Motor (S3-15%)	kw	7,5	7,5	7,5	7,5
Battery Voltage/Capacity	V/Ah	48/300	48/300	48/300	48/300
Battery Weight	kg	500	500	500	500
Steering System		EPS	EPS	EPS	EPS
OTHERS					
Battery Replacement Type		Side Pull	Side Pull	Side Pull	Side Pull

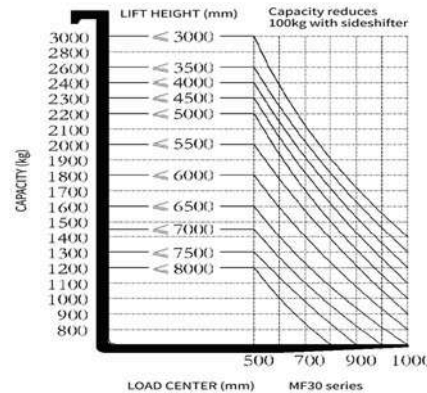
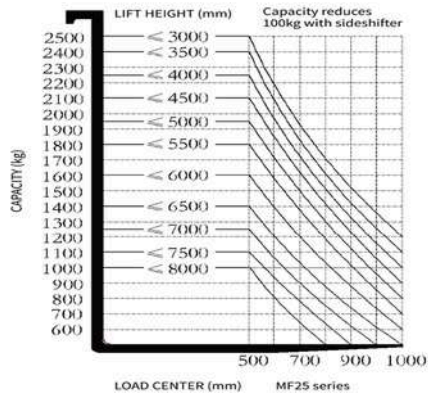
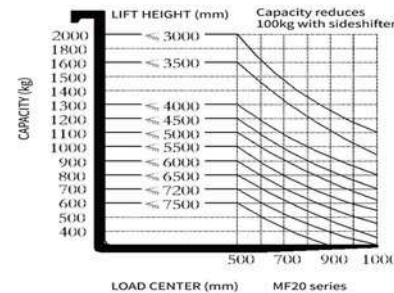
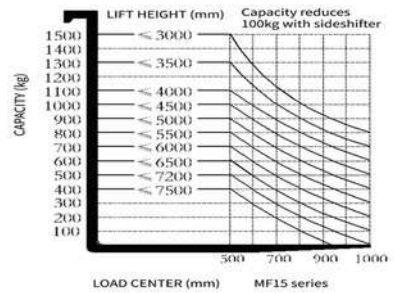
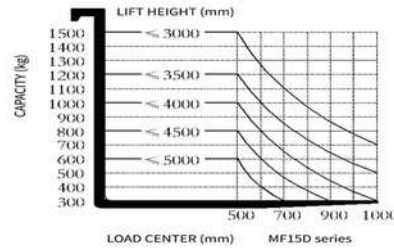
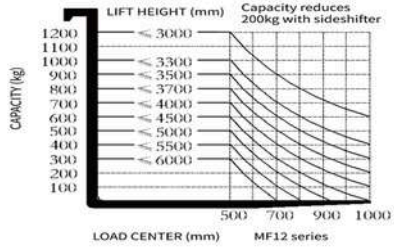
MODEL	UNIT	MF25 (Duplex Mast)	MF25 (Triplex Full Free Mast)	MF30 (Duplex Mast)	MF30 (Triplex Full Free Mast)
Power Type		Battery	Battery	Battery	Battery
Operation Type		Stand On	Stand On	Stand On	Stand On
Rated Capacity	Q kg	2500	2500	3000	3000
Load Center	C mm	500	500	500	500
Front Overhang	x mm	180	180	180	180
Wheelbase	y mm	1720	1720	1920	1920
WEIGHTS					
Weight (Include Battery)	kg	3300	3580	3400	3680
Axle Capacity With No Load, Drive Side/Load Side	kg	/	/	/	/
Axle Capacity With Full Load When Fork Forward, Drive Side/Load Side	kg	/	/	/	/
Axle Capacity With Full Load When Fork Backward, Drive Side/Load Side	kg	/	/	/	/
WHEELS					
Wheel Type		PU	PU	PU	PU
Load Wheel	mm	267x165	267x165	267x165	267x165
Drive Wheel	mm	380x165	380x165	380x165	380x165
Auxiliary Wheel	mm	204x76	204x76	204x76	204x76
Number Of Wheel, Front/Rear(X=Drive Wheel)		2/1x+2	2/1x+2	2/1x+2	2/1x+2
Wheel Tread, Drive Side	b10 mm	725	725	725	725
Wheel Tread, Load Side	b11 mm	1135	1135	1135	1135
DIMENSIONS					
Fork Tilt	a/B (°)	3/5	3/5	3/5	3/5
Mast Close Height	h1 mm	2082	2292	2082	2292
Free Lift Height	h2 mm	80	1550	80	1550
Lift Height	h3 mm	3000	4500	3000	4500
Mast Extended Height With Load-Backrest	h4 mm	3960	5460	4050	5550
Overhead Guard Height	h5 mm	2300	2300	2300	2300
Stand Board Height	h6 mm	350	350	350	350
Overall Length	h7 mm	2387	2434	2487	2534
Overall Width	l1 mm	1090/1270	1090/1270	1090/1270	1090/1270
Fork Size	b1/b2 mm	1070/100/35	1070/100/35	1070/122/45	1070/122/45
Fork Carriage Width	l/e/s mm	1088	1088	1148	1148
Fork Outside Width	b3 mm	244-772	244-772	250-750	250-750
Inner Leg Width	b5 mm	892	892	892	892
Reach Stroke	b4 mm	825	775	925	875
Mast Ground Clearance	m1 mm	82	82	82	82
Aisel Width For Pallet 1000*1200mm(C=500mm)	Ast mm	2894	2919	3045	3066
Aisel Width For Pallet 800*1200mm(C=500mm)	Ast mm	2882	2921	3000	3037
Turning Radius	Wa mm	1995	1995	2192	2192
PERFORMANCE					
Driving Speed (Load/Unload)	km/h	9/10	9/10	9/10	9/10
Lifting Speed (Load/Unload)	mm/s	240/32	220/300	220/320	200/300
Lowering Speed (Load/Unload)	mm/s	340/290	310/260	340/290	310/260
Max. Gradeability (Load/Unload)(S2-5min)	%	10	10	10	10
Brake Type		Mechanical	Mechanical	Mechanical	Mechanical
DRIVING					
Driving Motor (S2-60min)	kw	5,5	5,5	5,5	5,5
Lifting Motor (S3-15%)	kw	8,6	8,6	8,6	8,6
Battery Voltage/Capacity	V/Ah	48/400	48/400	48/400	48/400
Battery Weight	kg	650	650	650	650
Steering System		EPS	EPS	EPS	EPS
OTHERS					
Battery Replacement Type		Side Pull	Side Pull	Side Pull	Side Pull



DETAILS

- AC drive system, AC motor to provide strong power, more accurate control, more stable operation, highstrength vertical gearbox, super long service lift, through multi-layer testing of oil pump, cylinder and pipeline, to ensure the high reliability of the hydraulic system.
- Fully considering the human-machine engineering console, each function button is convenient and easy to operate; The driving position is equipped with cushion to make driving more comfortable.
- Side pull battery, makes battery charging and replacement more convenient.
- The newly designed control pedal and the ergonomic shock-proof pedal ensure the driving comfort.
- The mast has function of moving forward to realize the storage of goods without moving the body, which is more comfortable and safe. The high quality channel steel ensures the load capacity of the reach truck.
- Anti-skid braking function prevents the forklift from sliding down when it loses control or runs on a slope; Strong design of overhead guard, safer operation.

Capacity Chart Stand-On Reach Truck MF12-30



Mast Stand-On Reach Truck MF12-30

Duplex Mast		MF12			
Model	MF	12-30	12-35	12-40	12-45
Liftng Height	h3 mm	3000	3500	4000	4500
Mast Extended Height With Load-Backrest	h4 mm	3960	4460	4960	5460
Mast Close Height	h1 mm	2080	2330	2630	2880

Triplex Full Free Mast		MF12			
Model	MF	12-45	12-50	12-55	12-60
Liftng Height	h3 mm	4500	5000	5500	6000
Mast Extended Height With Load-Backrest	h4 mm	5455	5955	6455	6955
Mast Close Height	h1 mm	2080	2247	2413	2580
Free Lift Height	h2 mm	1480	1647	1813	1980

Duplex Mast		MF15			MF15D				
Model	MF	15-30	15-35	15-40	15-45	15D-30	15D-35	15D-40	15D-45
Liftng Height	h3 mm	3000	3500	4000	4500	3000	3500	4000	4500
Mast Extended Height With Load-Backrest	h4 mm	3960	4460	4960	5460	3960	4460	4960	5460
Mast Close Height	h1 mm	2082	2332	2632	2882	2080	2330	2630	2880
Free Lift Height	h2 mm	400	400	400	400	0	0	0	0

Triplex Full Free Mast		MF15D	
Model	MF	15D-45	15D-50
Liftng Height	h3 mm	4500	5000
Mast Extended Height With Load-Backrest	h4 mm	5455	5955
Mast Close Height	h1 mm	2080	2247
Free Lift Height	h2 mm	1480	1647

Triplex Full Free Mast		MF15							
Model	MF	15-45	15-50	15-55	15-60	15-65	15-70	15-72	15-75
Liftng Height	h3 mm	4500	5000	5500	6000	6500	7000	7200	7500
Mast Extended Height With Load-Backrest	h4 mm	5460	5960	6460	6960	7460	7960	8160	8460
Mast Close Height	h1 mm	2140	2309	2475	2642	2809	2975	3042	3142
Free Lift Height	h2 mm	1542	1709	1875	2042	2209	2375	2442	2542

Duplex Mast		MF20			MF25		
Model	MF	20-30	20-35	20-40	20-45	25-30	25-35
Liftng Height	h3 mm	3000	3500	4000	4500	3000	3500
Mast Extended Height With Load-Backrest	h4 mm	3960	4460	4960	5460	3960	4460
Mast Close Height	h1 mm	2082	2332	2632	2882	2082	2332
Free Lift Height	h2 mm	80	80	80	80	80	80

Triplex Full Free Mast		MF20						
Model	MF	20-45	20-50	20-55	20-60	20-65	20-70	20-72
Liftng Height	h3 mm	4500	5000	5500	6000	6500	7000	7200
Mast Extended Height With Load-Backrest	h4 mm	5460	5960	6460	6960	7460	7960	8160
Mast Close Height	h1 mm	2142	2309	2475	2642	2809	2975	3042
Free Lift Height	h2 mm	1542	1709	1875	2042	2209	2375	2442

Triplex Full Free Mast		MF25								
Model	MF	25-45	25-50	25-55	25-60	25-65	25-70	25-72	25-75	25-80
Liftng Height	h3 mm	4500	5000	5500	6000	6500	7000	7200	7500	8000
Mast Extended Height With Load-Backrest	h4 mm	5460	5960	6460	6960	7460	7960	8160	8460	8960
Mast Close Height	h1 mm	2292	2459	2625	2792	2959	3125	3192	3292	3559
Free Lift Height	h2 mm	1550	1716	1884	2050	2216	2384	2450	2550	2816

Duplex Mast		MF30			
Model	MF	30-30	30-35	30-40	30-45
Liftng Height	h3 mm	3000	3500	4000	4500
Mast Extended Height With Load-Backrest	h4 mm	4050	4550	5050	5550
Mast Close Height	h1 mm	2082	2332	2632	2882
Free Lift Height	h2 mm	80	80	80	80

Triplex Full Free Mast		MF30								
Model	MF	30-45	30-50	30-55	30-60	30-65	30-70	30-72	30-75	30-80
Liftng Height	h3 mm	4500	5000	5500	6000	6500	7000	7200	7500	8000
Mast Extended Height With Load-Backrest	h4 mm	5550	6050	6550	7050	7550	8050	8250	8550	9050
Mast Close Height	h1 mm	2292	2459	2625	2792	2959	3125	3192	3292	3559
Free Lift Height	h2 mm	1550	1716	1884	2050	2216	2384	2450	2550	2816

Seated Electric Reach Truck 1,6-2t

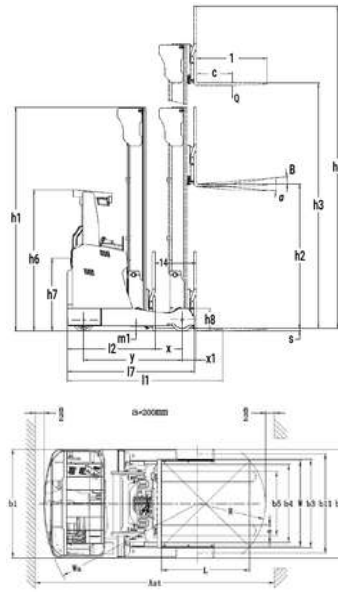
MATERIAL HANDLING EQUIPMENT

Seated Electric Reach Truck 2,5-3t

MATERIAL HANDLING EQUIPMENT

MODEL	UNIT	MFZ16M	MFZ20M	MFZ16H	MFZ20H
Drive Type		Battery	Battery	Battery	Battery
Operating Type		Seated	Seated	Seated	Seated
Operation Method		Electric Proportional	Electric Proportional	Electric Proportional	Electric Proportional
Load Capacity	Q kg	1600	2000	1600	2000
Load Center	C mm	600	600	600	600
Distance From Front Axle To Fork Vertical Face	x mm	371	407	312	335
Front Overhang	x1 mm	184	205	184	205
Wheelbase	y mm	1400	1500	1400	1500
WEIGHTS					
Service Weight (Inc. Battery)	kg	3700	4131	4120	4346
Axle Loading, Fork Back, Unload Front/Rear	kg	2309/1391	2446/1510	2453/1467	2552/1794
Axle Loading, Fork Forward, Load Front/Rear	kg	799/4501	730/5226	931/4789	833/5513
Axle Loading, Fork Back, Load Front/Rear	kg	2042/3258	2196/3761	2020/3600	2205/4141
WHEELS					
Tyre Type, Front/Rear		Solid PU	Solid PU	Solid PU	Solid PU
Tyre Size, Front	mm	343x120	343x120	343x120	343x120
Tyre Size, Rear	mm	300x120	343x120	300x120	343x120
Wheels, Number Front/Rear (X=Driven)		1x/2	1x/2	1x/2	1x/2
Track Width, Rear	b11(11)	1170	1170	1170	1170
DIMENSIONS					
Mast/Fork Tilt Angel Front/Rear	a/B (°)	2/4	2/4	2/4	2/4
Mast Retracted Height	h1 mm	2253	2253	2820	2820
Free Lift Height	h2 mm	1108	1108	1676	1676
Lift Height	h3 mm	4600	4600	6300	6300
Mast Extended Height (With Backrest)	h4 mm	5635	5635	7335	7335
Overhead Guard Height	h6 mm	2200	2200	2200	2200
Seat Height	h7 mm	1122	1122	1122	1122
Side Shift Distance		±50	±50	±50	±50
Support Arms Height	h8 mm	320	363	320	363
Overall Length		2345	2409	2404	2481
Length To Fork Face	l2 mm	1275	1339	1334	1411
Overall Width	b1/b2 mm	1270/1290	1270/1290	1270/1290	1270/1290
Fork Dimensions	V/e/s mm	1070x100x35	1070x122x40	1070x100x35	1070x122x40
Fork Carriage Width	b3 mm	1020	1020	1020	1020
Fork Outside Spread	b5 mm	232-728	254-750	232-728	254-750
Support Arms Inner Width	b4 mm	906	906	906	906
Reach Distance	l4 mm	555	613	496	541
Ground Clearance Below Mast	m1 mm	75	75	75	75
Aisle Width With Pallet 1000*1200mm 1200 Cross Fork	Ast mm	2716	2791	2760	2843
Aisle Width With Pallet 800*1200mm 1200 Cross Fork	Ast mm	2767	2835	2821	2900
Turning Radius	Wa mm	1647	1747	1647	1747
Vehicle Length	7 mm	1796	1918	1796	1918
PERFORMANCE					
Traveling Speed, Load/Unload	km/h	14/14	14/14	14/14	14/14
Lift Speed, Load/Unload	m/s	0,33/0,5	0,33/0,5	0,33/0,5	0,33/0,5
Lowering Speed, Load/Unload	m/s	0,53/0,52	0,53/0,52	0,53/0,52	0,53/0,52
Mast Travel Speed, Forward/Retract	m/s	0,2	0,2	0,2	0,2
Gradeability	%	10	10	10	10
Service Brake		Hydraulic	Hydraulic	Hydraulic	Hydraulic
DRIVING					
Drive Motor Rating (S2=60min)	kw	5,8	5,8	5,8	5,8
Lift Motor Rating (S3=15%)	kw	12,8	12,8	12,8	12,8
Steer Motor Rating (S2=60min)	kw	0,4	0,4	0,4	0,4
Battery	V/Ah	48/420	48/560	48/560	48/700
Battery Weight	kg	715	920	920	1100
OTHERS					
Battery Replacement	km/h	Front Pull	Front Pull	Front Pull	Front Pull
Noise Level	m/s	75	75	75	75

MODEL	UNIT	MFZ25M	MFZ30M
Drive Type		Battery	Battery
Operating Type		Seated	Seated
Operation Method		Electric Proportional	Electric Proportional
Load Capacity	Q kg	2500	3000
Load Center	C mm	600	600
Distance From Front Axle To Fork Vertical Face	x mm	442	526
Front Overhang	x1 mm	205	205
Wheelbase	y mm	1650	1750
WEIGHTS			
Service Weight (Inc. Battery)	kg	4760	4800
Axle Loading, Fork Back, Unload Front/Rear	kg	2938/1822	2990/1810
Axle Loading, Fork Forward, Load Front/Rear	kg	1022/6238	889/6911
Axle Loading, Fork Back, Load Front/Rear	kg	2832/4428	3043/4757
WHEELS			
Tyre Type, Front/Rear		Solid PU	Solid PU
Tyre Size, Front	mm	343x140	343x140
Tyre Size, Rear	mm	343x130	343x130
Wheels, Number Front/Rear (X=Driven)		1x/2	1x/2
Track Width, Rear	b11(11)	1170	1170
DIMENSIONS			
Mast/Fork Tilt Angel Front/Rear	a/B (°)	2/4	2/4
Mast Retracted Height	h1 mm	3636	3636
Free Lift Height	h2 mm	2736	2736
Lift Height	h3 mm	8000	8000
Mast Extended Height (With Backrest)	h4 mm	9172	9172
Overhead Guard Height	h6 mm	2200	2200
Seat Height	h7 mm	1122	1122
Side Shift Distance		±50	±50
Support Arms Height	h8 mm	363	363
Overall Length		2524	2540
Length To Fork Face	l2 mm	1454	1470
Overall Width	b1/b2 mm	1270/1300	1270/1300
Fork Dimensions	V/e/s mm	1070x125x45	1070x125x45
Fork Carriage Width	b3 mm	1020	1020
Fork Outside Spread	b5 mm	250-750	250-750
Support Arms Inner Width	b4 mm	906	906
Reach Distance	l4 mm	652	736
Ground Clearance Below Mast	m1 mm	75	75
Aisle Width With Pallet 1000*1200mm 1200 Cross Fork	Ast mm	2915	2960
Aisle Width With Pallet 800*1200mm 1200 Cross Fork	Ast mm	2953	2979
Turning Radius	Wa mm	1896	1996
Vehicle Length	7 mm	2068	2168
PERFORMANCE			
Traveling Speed, Load/Unload	km/h	10/10	10/10
Lift Speed, Load/Unload	m/s	0,28/0,34	0,28/0,34
Lowering Speed, Load/Unload	m/s	0,42/0,42	0,42/0,42
Mast Travel Speed, Forward/Retract	m/s	0,2	0,2
Gradeability	%	10	10
Service Brake		Hydraulic	Hydraulic
DRIVING			
Drive Motor Rating (S2=60min)	kw	5,8	5,8
Lift Motor Rating (S3=15%)	kw	12,8	12,8
Steer Motor Rating (S2=60min)	kw	0,4	0,4
Battery	V/Ah	48/700	48/700
Battery Weight	kg	1100	1100
OTHERS			
Battery Replacement	km/h	Front Pull	Front Pull
Noise Level	m/s	75	75



DETAILS

- Tilted overhead guard beam helps observe goods at height, enhancing high-level stacking visibility.
- Full AC system with imported controller, stable and efficient.
- 180°/360° steering mode switch increases efficiency in aisles; 360° mode allows direction switch without stopping.
- Built-in (integrated) side shifter: standard fork can move left/right, easier to adjust fork position when picking goods
- Equipped with integrated handle and thumb switch, lighter and more comfortable to operate.
- Adjustable seat for optimal operator comfort, easier for long-time work.
- Quiet operation with low noise level, more comfortable driving experience.
- OPS presence detection: truck functions (driving, hydraulics, etc.) only activate when operator is in position and foot switch is pressed, ensuring safety.

Mast Reach Truck Seated MFZ16-30

Triplex Full-Free Mast	MFZ16M:4600-9500 ; MFZ16H:4600-10500mm ; MFZ20M/MFZ20H:4600-12500mm									
Lifting Height	h3	mm	4600	6000	7000	8000	9000	10000	11000	12500
Mast Extended Height (With Backrest)	h4	mm	5635	7035	8035	9035	10035	11035	12035	13535
Mast Retracted Height	h1	mm	2253	2720	3153	3486	3920	4253	4586	5086
Free Lift Height (With Backrest)	h2	mm	1108	1576	2008	2340	2845	3178	3511	4011
Free Lift Height (Without Backrest)	h2	mm	1108	1576	2008	2340	2876	3208	2540	4040

Triplex Full-Free Mast	MFZ25M/MFZ30M:3600-8500									
Lifting Height	h3	mm	3600	4600	5400	6000	6500	7000	7500	8500
Mast Extended Height (With Backrest)	h4	mm	4772	5772	6572	7172	7672	8172	8672	9672
Mast Retracted Height	h1	mm	2070	2403	2670	2870	3037	3303	3469	3803
Free Lift Height (With Backrest)	h2	mm	858	1191	1458	1658	1825	2091	2257	2591
Free Lift Height (Without Backrest)	h2	mm	1168	1502	1768	1968	2135	2402	2570	2902

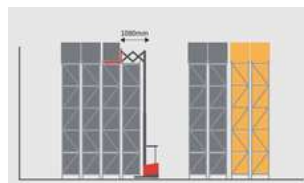
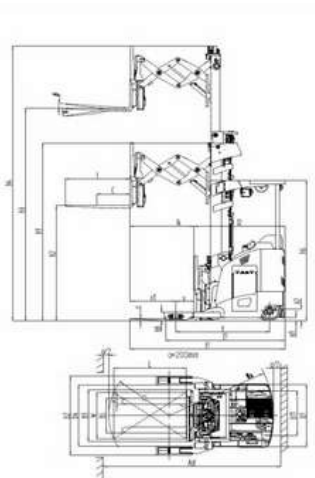
Capacity Chard Reach Truck Seated MFZ16-30

Load center distance: C=600mm Lift height: h3(mm) Load capacity: Q(kg)

Lift height Model	5400	6000	7000	8000	8500	9500	10500	11500	12500
MFZ16M	1600	1600	1500	1300	1200	900	/	/	/
MFZ16H	1600	1600	1550	1350	1250	1000	800	/	/
MFZ20M	2000	1900	1700	1500	1350	1100	900	700	600
MFZ20H	2000	2000	1800	1600	1450	1300	1100	950	800
MFZ25M	2400	2350	2100	1850	1700	/	/	/	/
MFZ30M	2500	2400	2150	1900	1750	/	/	/	/

*This table lists only partial load parameters. For detailed information, please consult a professional sales engineer.

MODEL	UNIT	1FE14D
Forklift Type		Double Scissor
Power Type		Battery
Operation		Stand ON
Operation Mode		Electric Proportional
Load Capacity	Q kg	1450
Load Center Distance	C mm	600
Distance From Fork Surface To Front Wheel Center	x1 mm	304
Front Overhang	x1 mm	776
Wheelbase	y mm	1560
WEIGHTS		
Service Weight (Incl. Battery)	kg	Refer To Mast Spec
WHEELS		
Tyre Type, Front/Rear		Polyurethane
Tyre Size, Front	mm	203x101
Tyre Size, Rare	mm	343x140
Balance Wheel Size	mm	4x152x105
Wheels, Number Front/Rear (X=Driven)		4/1X/4
Track Width, Front	b11 mm	771
DIMENSIONS		
Fork Tilt Angle, Front/Rear	a/B (°)	3/4
Mast Retracted Height	h1 mm	Refer To Mast Spec
Free Lift Height	h2 mm	Refer To Mast Spec
Lift Height	h3 mm	Refer To Mast Spec
Mast Extended Height	h4 mm	Refer To Mast Spec
Overhead Guard Height	h6 mm	Refer To Mast Spec
Pedal Height	h7 mm	240
Side Shift Distance	mm	±50
Support Arms Height	h8 mm	150
Overall Length	l1 mm	Refer To Mast Spec
Length To Fork Face	l2 mm	1510
Overall Width	b1/b2 mm	1080/1364
Fork Size	l/e/s mm	1070/100/40
Backrest Width	b3 mm	894
Fork Outside Spread	b5 mm	222~702
Support Arms Inner Width (Customized)	b4 mm	1060
Reach Distance	l4 mm	1080
Ground Clearance Below Mast	m1 mm	31
Aisle Width With Pallet 1000*1200	Ast mm	3045
Turning Radius	Wa mm	1815
Overall Length (Not Incl. Fork)	l7 mm	2115
PERFORMANCE		
Traveling Speed, Load/Unload	km/h	8/10
Lifting Speed, Load/Unload	mm/s	350/500
Lowering Speed, Load/Unload	mm/s	550/550
Reaching Speed, Load/Unload	mm/s	200/200
Gradeability, Load/Unload (S2-5min)	%	10
Service Brake		Electromagnetic
DRIVING		
Drive Motor Rating (S2-60min)	kw	5,8
Lift Motor Rating (S3-15%)	kw	14
Steer Motor Rating (S2-60min)	kw	0,6
Battery Voltage/Nominal	V/Ah	48/550
Battery Weight	kg	860
OTHERS		
Battery Replacement Method		Side Pull



DETAILS

- Full AC maintenance-free system: energy-saving and efficient.
- Scissor telescopic mechanism: forks move forward or retract flexibly.
- Improved safety: Automatically sensed lowering speed limit and buffer function.
- High reliability: Speed sensor and temperature sensor system.
- Small turning radius, increased storage capacity.
- Excellent visibility, comfortable operation.

Mast Double Scissors Reach Truck 1FE14D

Triplex Full-Free Mast		1FE14D												
Lifting Height	h3 mm	5025	5330	5715	6095	6545	6320	6350	6400	6855	7010	7110	7315	7515
Mast Extended Height	h4 mm	6105	6410	6795	7175	7325	7400	7430	7480	7935	8090	8190	8395	8595
Mast Close Height	h1 mm	2260	2415	2590	2720	2820	2845	2855	2870	3025	3125	3160	3225	3295
Free Lifting Height	h2 mm	1180	1335	1510	1640	1740	1765	1775	1790	1945	2045	2080	2145	2215
Service Weight (Incl. Battery)	kg	3740	3800	3880	3950	3980	4000	4005	4015	4105	4135	4155	4200	4240

Triplex Full-Free Mast		1FE14D											
Lifting Height	h3 mm	7620	8000	8150	8230	8380	8660	9295	9450	9550	9650	9750	10160
Mast Extended Height	h4 mm	8700	9080	9230	9310	9460	9740	10375	10530	10630	10730	10830	11240
Mast Close Height	h1 mm	3330	3505	3560	3645	3695	3785	4060	4135	4165	4205	4245	4385
Free Lifting Height	h2 mm	2250	2425	2480	2565	2615	2705	2982	3055	3085	3125	3165	3285
Service Weight (Incl. Battery)	kg	4360	4435	4465	4480	4500	4565	4690	4725	4745	4765	4785	4870

Capacity Chard Double Scissors Reach Truck 1FE14D

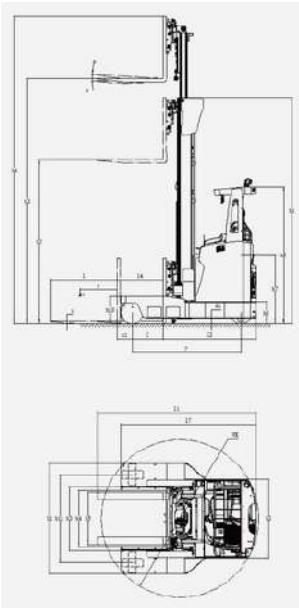
Model	h3(mm)	5025	5330	5715	6095	6245	6320	6350	6400	6855	7010	7110	7315	7515	7620	8000	8150	8230	8380	8660	9295	9450	9550	9650	9750	10160	
1FE14D Q(kg)	C=600mm							1450									1430	1420	1400	1370	1290	1270	1260	1250	1230	1200	
	C=700mm							1350										1330	1325	1310	1270	1200	1180	1170	1160	1150	1120
	C=800mm							1280										1240	1230	1220	1190	1120	1110	1100	1090	1080	1050
	C=900mm							1190										1170	1160	1150	1120	1050	1040	1030	1020	1010	980
	C=1000mm							1120										1100	1090	1080	1050	980	970	960	950	940	930
	C=1100mm							1060										1050	1040	1030	1000	940	930	920	910	900	880



MULTI DIRECTIONAL REACH TRUCK

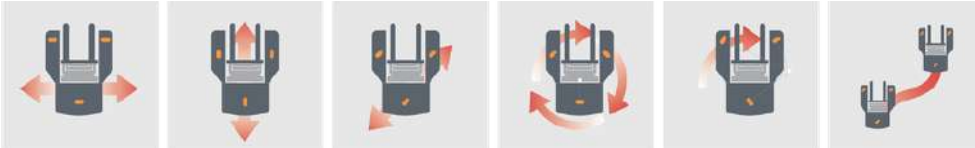
ALWAYS LIFTING ALWAYS GROWING

MODEL	UNIT	MQZ25M	MQZ30M
Power Type		Battery	Battery
Driving Type		Seated	Seated
Load Capacity	Q kg	2500	3000
Load Center Distance	C mm	600	600
Distance From Fork Surface To Front Wheel Center	x mm	416	500
Front Overhang	x1 mm	240	240
Wheelbase	y mm	1650	1750
WEIGHTS			
Service Weight (Inc. Battery)	kg	5100	5200
WHEELS			
Tyre Type, Front/Rear		Polyurethane	Polyurethane
Tyre Size, Load Side	mm	343x130	343x130
Tyre Size, Drive Side	mm	343x140	343x140
Wheels, Number Front/Rear		2/1X	2/1X
Track Width, Load Side	b11 mm	1420	1420
DIMENSIONS			
Fork Tilt Angle, Front/Rear	α/β (°)	2/4	2/4
Mast Retracted	h1 mm	3803	3803
Free Lift Height	h2 mm	2757	2757
Lifting Height	h3 mm	8500	8500
Mast Extended Height	h4 mm	9640	9640
Overhead Guard Height (Without Light)	h6 mm	2200	2200
Seat Height	h7 mm	1117	1117
Left And Right Leg Height	h10 mm	440	440
Overall Length	l1 mm	2550	2566
Body To Fork Surface Length	l2 mm	1480	1496
Overall Width	b1/b2 mm	1770/1270	1770/1270
Fork Dimensions	l/e/s mm	1070x125x45	1070x125x45
Fork Carriage Width	b3 mm	1030	1030
Fork Outside Spread	b5 mm	400~840	400~840
Support Arms Inner Width	b4 mm	906	906
Reach Distance	l4 mm	656	740
Body Length (Without Fork)	l7 mm	2062	2178
Ground Clearance Below Mast	m1 mm	75	75
Unload In-Situ Rotation Diameter	WK mm	2450	2532
PERFORMANCE			
Driving Speed, Load/Unload	km/h	8~10	8~10
Lifting Speed, Load/Unload	m/s	320/400	320/400
Lowering Speed, Load/Unload	m/s	420/420	420/420
Mast Reach Speed, Forward/Retract	%	200	200
Straight Driving Max. Gradeability, Load/Unload (S2=5min)		10	10
Side Driving Max. Gradeability, Load/Unload (S2=5min)		8	8
Brake Type		Electromagnetic	Electromagnetic
DRIVE			
Drive Motor Rating (S2=60min)	kw	8 (AC)	8 (AC)
Lifting Motor Rating (S3=15%)	kw	14 (AC)	14 (AC)
Battery Voltage/Nominal Capacity	V/Ah	48/700	48/700
Battery Weight	kg	1100	1100
OTHERS			
Battery Replacement Method		Front Pull And Hoist	Front Pull And Hoist



DETAILS

- HD video display: Equipped with wireless HD video display and rear-view mirrors for improved visibility.
- Spacious operation room and ergonomic design, give your drivers unparalleled comfort.
- Minimalist style operation interface: Clear wheel display and battery power information, easy to check during operation.
- Multi-directional driving mode, travel straight, side, oblique, right angle turn and in place rotation.
- All-wheel pure electric independent steering, electromagnetic braking, driving more assured.
- Smaller turning radius and smaller turning radius in place.
- Multi-functional forklift truck: ordinary pallet materials + long materials.



Side Travelling Mode Straight Travelling Mode Diagonal Travelling Mode Rotation model Min Right Angle Turning Diagonal Direction Adjustable



3-WAY PALLET STACKER
ALWAYS LIFTING ALWAYS GROWING

MODEL	UNIT	MC08	MC12	MC16
Power Type		Battery	Battery	Battery
Operation		Stand-On	Stand-On	Stand-On
Load Capacity	kg	700	1200	1600
Load Center Distance	mm	550	550	600
Overall Length	mm	2600	2960	3000
Overall Width	mm	1475	1475	1575
Turning Radius	mm	1600	1910	1980
Service Weight (Incl. Battery)	kg	2870	4860	5330
PERFORMANCE				
Travel Speed, Load/Unload	km/h	7,5	7,5	8
Lift Speed, Load/Unload	mm/s	350/400	300/300	300/300
Lowering Speed, Load/Unload	mm/s	300/350	340/340	340/340
DIMENSIONS				
Fork Dimensions	mm	1100/100/35	1200/125/50	1200/125/50
Spread Fork Outside	mm	260~760	265~765	265~765
Min. Stacking Aisle Width	mm	1500	1600	1600
Min. Main Aisle Width	mm	≥(2950+350)	≥(3350+350)	≥(3450+350)
ELECTRICAL PARAMETERS				
Drive Motor Rating	kw	4,5AC	5,5AC	5,5AC
Lift Motor Rating	kw	8,6AC	15AC	15AC
Battery Voltage/Rated Capacity	V/Ah	48/200	48/390	48/480
Battery Weight	kg	150	618	726
Steering System		Electric Steering	Electric Steering	Electric Steering
Battery Change Method		Side Pull	Side Pull	Side Pull

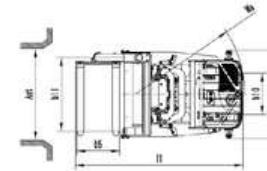
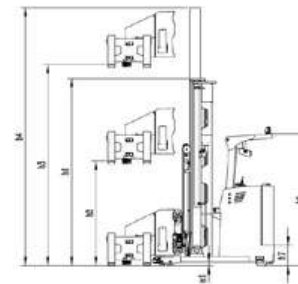
[1] The overall width with the guide wheels removed is 1370mm for the MC08&MC12 model and 1470mm for the MC16 model.

[2] Stacking aisle width +50mm with optional magnetic navigation.

[3] Safe margin +350mm for the width of the main aisle.

[4] Optional lithium battery specification: MC08: 48V/200Ah; MC12/16: 48/300Ah.

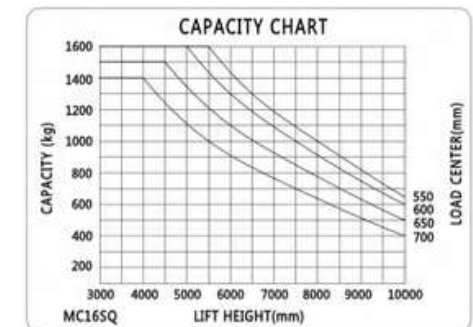
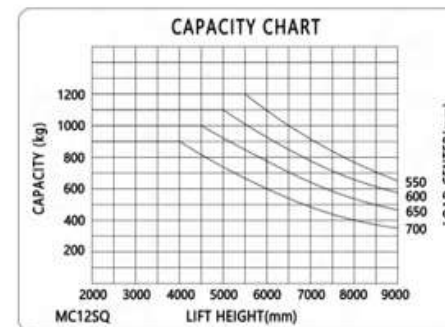
Note: Only some of the parameters are listed in the table. For details, please consult professional sales engineer.



DETAILS

- Hydraulic system includes side shifting and fork positioner for enhanced convenience and efficiency.
- Indoor Handling and Stacking Made Simple: Articulated forklift can efficiently transports goods from outdoor to indoor rack positions, enabling precise stacking and significant time savings. 1.9-meter narrow aisle operation: The articulated forklift's wide mast swing angle design reduces rack aisle widths to as low as 1.9 meters, allowing for more shelving and significantly increasing warehouse capacity.
- 210-degree flexible steering: The vehicle's mast can rotate 210 degrees, offering an ultra-small turning radius for flexible and comfortable operation, while maintaining the efficiency of traditional counterbalance forklifts.
- Maintenance-free AC motor, high efficiency with complete protection features. It includes speed and temperature sensors, ensuring high reliability and long lifespan. No maintenance costs for replacing carbon brushes.
- Wide-opening engine hood and detachable rear door panel facilitate easy battery replacement and maintenance.

Capacity Chard 3-Way Pallet Stacker MC12-16



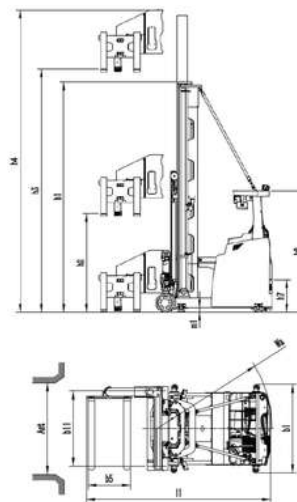
MODEL	UNIT	MCA16
Power Type		Battery
Operation		Seated
Load Capacity	kg	1600
Load Center Distance	mm	600
Overall Length	mm	3315
Overall Width	mm	1575
Turning Radius	mm	2085
Service Weight (Incl.Battery)	kg	6000
PERFORMANCE		
Travel Speed, Load/Unload	km/h	8/8
Lift Speed, Load/Unload	mm/s	300/300
Lowering Speed, Load/Unload	mm/s	340/340
DIMENSIONS		
Fork Dimensions	mm	1200/125/50
Spread Fork Outside	mm	265~765
Stacking Aisle Width (Pallet 1200x1200)	mm	1600
Main Aisle Width (Pallet 1200x1200)	mm	≥(3800+400)
ELECTRICAL PARAMETERS		
Drive Motor Rating	kw	8AC
Lift Motor Rating	kw	15AC
Battery Voltage/Rated Capacity	V/Ah	48/600
Battery Weight	kg	945
Steering System		Electric Steering
Battery Change Method		Front Pull

[1] The width of the vehicle without the guide wheels is 1470mm.

[2] The net channel width is applicable to standard mechanical guide rail models (magnetic navigation model, stacking net channel width +50mm), the above data varies depending on the use conditions.

[3] The main channel width safety margin of the mechanical guide rail model needs to be +400mm, the magnetic guidance model needs to be +400mm when using the manual rail entry function, and +900mm when using the automatic rail entry function.

[4] Optional lead-acid battery specifications: 48V/880Ah, Optional lithium battery specifications: 48V/460Ah, 48V/600Ah.

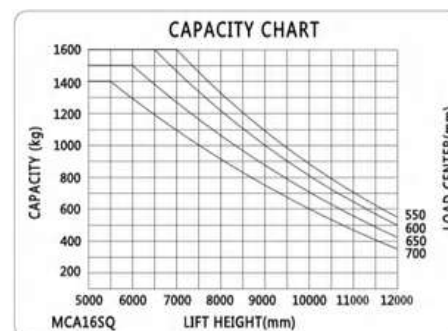


DETAILS

- Optimal Space Utilization and High Flexibility.
- Standard equipped with an electric 3-way fork head, which allows the forklift to pick up goods directly in the fixed position without significant turning, greatly enhancing work efficiency.
- Electric drive with zero exhaust emissions and low noise, suitable for indoor operations.
- The MCA16 features a maintenance-free AC system paired with a fully electronic steering system, resulting in low energy consumption.
- Standard equipped with a side-pull battery, making battery replacement and daily maintenance more convenient and efficient.
- Simplified design for easy maintenance and upkeep, reducing operating costs and downtime.
- Features a high-clearance mast that maintains no-load-loss stability even at 6500 mm, ensuring excellent high-load performance.



Capacity Chart 3-Way Pallet Stacker MCA16



Mast 3-Way Pallet Stacker MC08-16 & MCA16

MC08 Mast Specifications (Duplex Mast)

Type	MC08	08-30	08-35	08-40	08-45	08-50	08-55	08-60
Lifting Height	h3(mm)	3000	3500	4000	4500	5000	5500	6000
Mast extended height (incl. the fork guard)	h4(mm)	3820	4320	4820	5320	5820	6320	6820
Mast retracted height	h1(mm)	2195	2445	2695	2945	3195	3445	3695
Free lifting height	h2(mm)							

MC08 Mast Specifications (Triplex Full Free Mast)

Type	0850-40	0850-45	0850-50	0850-55	0850-60
Lifting Height	4000	4500	5000	5500	6000
Mast extended height (incl. the fork guard)	4920	5320	5820	6320	6820
Mast retracted height	2233	2400	2567	2733	2900
Free lifting height	1440	1615	1781	1949	2115

MC12 Mast Specifications (Duplex Mast)

Type	MC12	12-30	12-35	12-40	12-45	12-50	12-55	12-60
Lifting Height	h3(mm)	3000	3500	4000	4500	5000	5500	6000
Mast extended height (incl. the fork guard)	h4(mm)	3935	4435	4935	5435	5935	6435	6935
Mast retracted height	h1(mm)	2435	2685	2935	3185	3435	3685	3935
Free lifting height	h2(mm)							

MC12 Mast Specifications (Triplex Full Free Mast)

Type	1250-45	1250-50	1250-55	1250-60	1250-65	1250-70	1250-75	1250-80	1250-85	1250-90
Lifting Height	4500	5000	5500	6000	6500	7000	7500	8000	8500	9000
Mast extended height (incl. the fork guard)	5440	5940	6440	6940	7440	7940	8440	8940	9440	9940
Mast retracted height	2835	2805	2970	3135	3305	2470	3635	3805	3970	4135
Free lifting height	1750	1910	2080	2250	2410	2580	2750	2910	3080	3250

MC16 Mast Specifications (Duplex Mast)

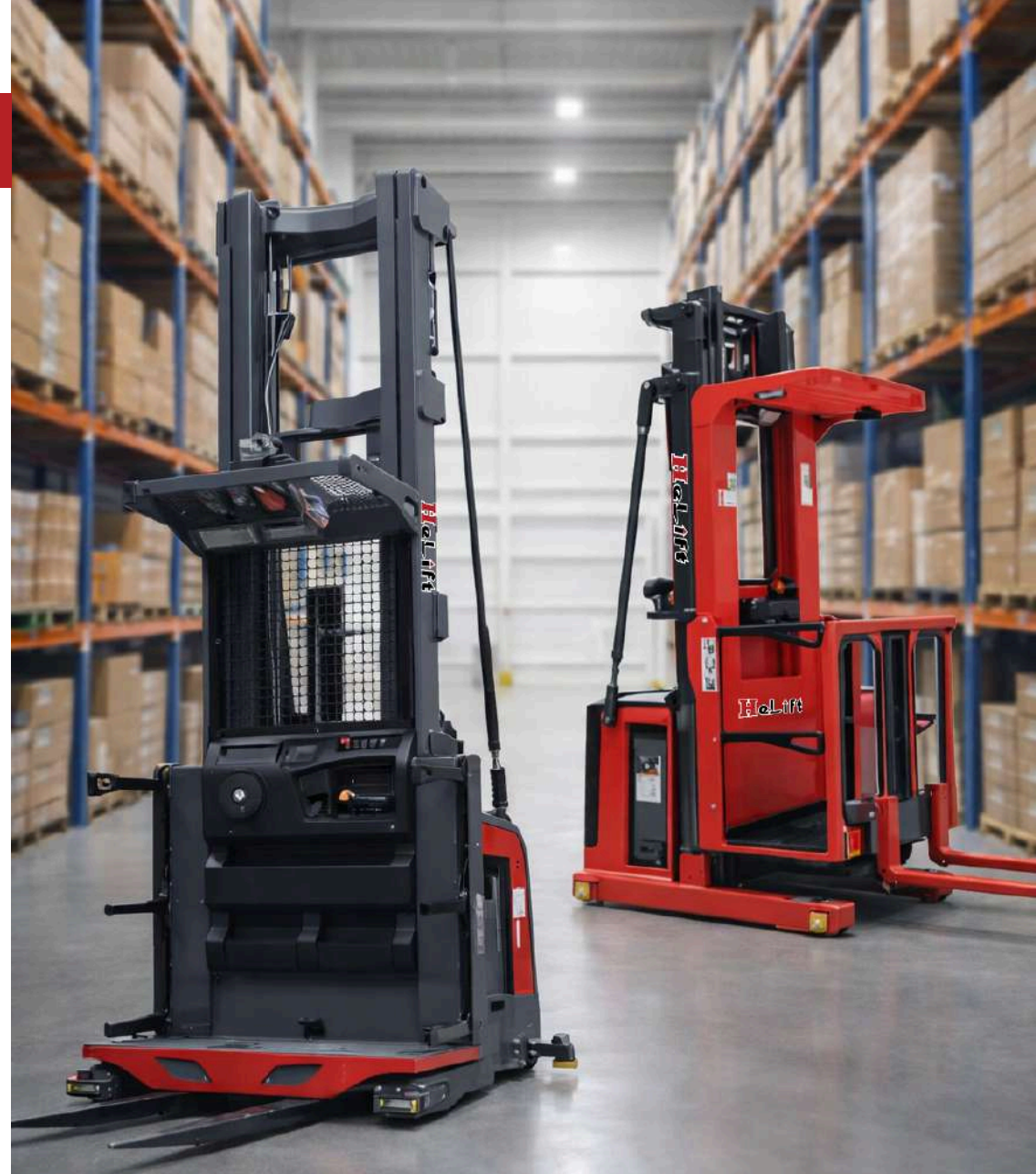
Type	MC16	16-30	16-35	16-40	16-45	16-50	16-55	16-60
Lifting Height	h3(mm)	3000	3500	4000	4500	5000	5500	6000
Mast extended height (incl. the fork guard)	h4(mm)	4065	4565	5065	5565	6065	6565	7065
Mast retracted height	h1(mm)	2565	2815	3065	3315	3565	3815	4065
Free lifting height	h2(mm)							

MC16 Mast Specifications (Triplex Full Free Mast)

Type	1650-45	1650-50	1650-55	1650-60	1650-65	1650-70	1650-75	1650-80	1650-85	1650-90	1650-95	1650-100
Lifting Height	4500	5000	5500	6000	6500	7000	7500	8000	8500	9000	9500	10000
Mast extended height (incl. the fork guard)	5570	6070	6570	7070	7570	8070	8570	9070	9570	10070	10570	11070
Mast retracted height	2785	2935	3100	3265	3435	3600	3765	3935	4100	4265	4435	4600
Free lifting height	1750	1910	2080	2250	2410	2580	2750	2910	3080	3250	3410	3580

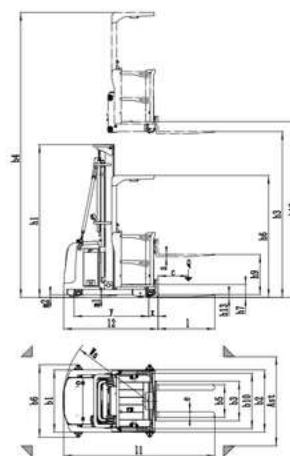
MCA16 Mast Specifications (Triplex Full Free Mast)

Type	MCA16	1650-45	1650-50	1650-55	1650-60	1650-65	1650-70	1650-75	1650-80	1650-85	1650-90	1650-95	1650-100	1650-105	1650-110	1650-115	1650-120
Lifting Height	h3(mm)	4500	5000	5500	6000	6500	7000	7500	8000	8500	9000	9500	10000	10500	11000	11500	12000
Mast extended height (incl. the fork guard)	h4(mm)	6650	7150	7650	8150	8650	9150	9650	10150	10650	11150	11650	12150	12650	13150		
Mast retracted height	h1(mm)	2765	2935	3100	3265	3435	3600	3765	3935	4100	4265	4435	4600	4765	4935	5100	5265
Free lifting height	h2(mm)	1750	1910	2080	2250	2410	2580	2750	2910	3080	3250	3410	3580	3750	3910	4080	4250



ELECTRIC ORDER PICKER
ALWAYS LIFTING ALWAYS GROWING

MODEL	UNIT		MHA10L	MHA10S	
Power Type			Electric	Electric	
Operation			Order Picking	Order Picking	
Load Capacity	Q	kg	1000	1000	
Load Center Distance	C	mm	500	500	
Front Overhang	x	mm	148	148	
Wheelbase	y	mm	1410	140	
WEIGHTS					
Service Weight (Inc. Battery)			kg	2490	2830
Axle Loading, Load Front/Rear			kg	940/2550	1130/2700
Axle Loading, Unload Front/Rear			kg	1410/1080	1610/1220
WHEELS					
Tyre Type, Front/Rear			Polyurethane	Polyurethane	
Tyre Size, Front			mm	150x90	150x90
Tyre Size, Rear			mm	254x102	254x102
Wheels, Number Front/Rear (X=Driven)				4/1X	4/1X
Track Width, Rear	B10	mm	1008	1008	
Track Width, Front	b11	mm	0	0	
DIMENSIONS					
Mast Retracted Height	h1	mm	Refer To The Mast Specification		
Free Lift Height	h2	mm	Refer To The Mast Specification		
Lift Height	h3	mm	Refer To The Mast Specification		
Mast Extended Height	h4	mm	Refer To The Mast Specification		
Max. Lifting Height	h3+h9	mm	Refer To The Mast Specification		
Max. Picking Height	h12+1600	mm	Refer To The Mast Specification		
Overhead Guard Height	h6	mm	2270	2270	
Ground Clearance, Min. Height Of The Operation Surface	h7	mm	260	260	
Auzillary Lift Height	h9	mm	Refer To The Mast Specification		
Ground Clearance, Min. Fork Surface	h12	mm	70	70	
Overall Length	h13	mm	2825	2835	
Body To Fork Surface Length	l1	mm	1755	1765	
Overall Width	l2	mm	1150/1150	1150/1150	
Fork Dimensions	b1/b2	mm	1070/100/40	1070/100/40	
Fork Rack Width	l/e/s	mm	730	730	
Fork Outside Spread	b3	mm	700~220	700~220	
Width Over Guide Rollers	b5	mm	1336	1336	
Ground Clearance Below Mast	b6	mm	50	50	
Ground Clearance, Body	1m	mm	50	50	
Aisle Width	m2	mm	1750	1750	
Turning Radius	Ast	mm	1625	1625	
Main Aisle Width	Wa	mm	≥(2920+400)	≥(2930+400)	
PERFORMANCE					
Traveling Speed, Load/Unload			km/h	6/6	6/6
Lift Speed, Load/Unload			m/s	115/140	115/140
Lowering Speed, Load/Unload			m/s	165/125	165/125
Max. Gradient, Load/Unload			%	/	/
Traveling Brake			Regenerative Brake/Electromagnetic Brake		
Service Brake			Electromagnetic	Electromagnetic	
DRIVE					
Drive Motor Rating (S2=60min)			kw	2.5 (AC)	2.5 (AC)
Lift Motor Rating (S3=15%)			kw	3 (AC)	3 (AC)
Battery Voltage/Nominal Capacity			V/Ah	24/400	24/400
Battery Weight			kg	340	340
OTHERS					
Type Of Drive Control			AC	AC	
Noise Level At Operator's Ear (EN12053 Standard)			70	70	

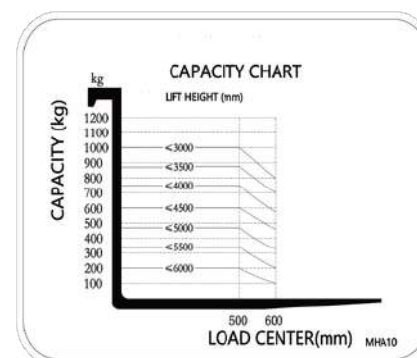


DETAILS

- Equipped with an emergency stop button and speed-limiting functions, ensuring safe operation during high-lift and turning conditions.
- Operators can lean on four secure contact points, offering safety and confidence during high-altitude tasks.
- HD display and lighting provide clear visibility in low-light environments, improving picking safety.
- Optimized travel speeds improve efficiency, accelerating picking operations and minimizing work time to help you achieve more in less time.
- MHA order pickers are primarily used for material picking operations from warehouse shelves.
- They are suitable for picking materials from low to mid-level shelves.
- For light-duty, indoor operations.



Capacity Chard Electric Order Picker MHA10

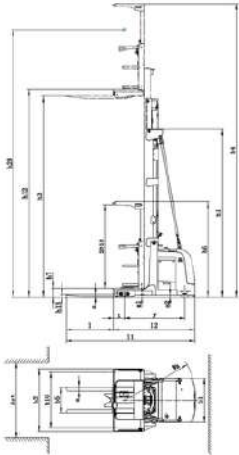


Mast Electric Order Picker MHA10

Duplex Mast					
Model	MHA	10-30	10-35	10-40	10-45
Lift height		2760	3260	3760	4260
Max. Lifting height		3430	3930	4430	4930
Max.Picking height		4600	5100	5600	6100
Mast retracted height		2300	2550	2850	3100
Mast extended height		5010	5510	6060	6610
Free Lifting height		0	0	0	0

Triplex Mast						
Model	MHA	10-40S	10-45S	10-50S	10-55S	10-60S
Lift height		3760	4260	4760	5260	5760
Max. Lifting height		4430	4930	5430	5930	6430
Max.Picking height		5600	6100	6800	7100	7600
Mast retracted height		2149	2316	2482	2649	2815
Mast extended height		5955	6455	6955	7455	7955
Free Lifting height		0	0	0	0	0

MODEL	UNIT	1MH13U-T	1MH13U-H
Power Type		Battery	Battery
Operation		Picking	Picking
Load Capacity	Q kg	1360	1360
Load Center Distance	C mm	600	600
Front Overhang	x mm	277	277
Wheelbase	y mm	1435	1555
WEIGHTS			
Service Weight (Inc. Battery)	kg	/	/
Axle Loading, Load Front/Rear	kg	/	/
Axle Loading, Unload Front/Rear	kg	/	/
WHEELS			
Tyre Type, Front/Rear		Polyurethane	Polyurethane
Tyre Size, Front	mm	343x120	343x120
Tyre Size, Rear	mm	152x105	152x105
Wheels, Number Front/Rear (X=Driven)		4/1X	4/1X
Track Width, Front	b10 mm	918	1368
DIMENSIONS			
Mast Retracted Height	h1 mm	Refer To The Mast Specification	
Free Lift Height	h2 mm	Refer To The Mast Specification	
Lift Height	h3 mm	Refer To The Mast Specification	
Mast Extended Height	h4 mm	Refer To The Mast Specification	
Max. Picking Height	h12+1600 mm	Refer To The Mast Specification	
Overhead Guard Height	h6 mm	2320	2320
Platform Height	h7 mm	230	230
Platform Height, Raised	h12 mm	Refer To The Mast Specification	
Ground Clearance, Min. Fork Surface	h13 mm	70	70
Overall Length	l1 mm	3178	3178
Overall Width	b1/b2 mm	1070/1070	1070/1520
Fork Dimensions	l/e/s mm	1220/100/50	1220/100/50
Fork Outside Spread	b5 mm	577, 635, 693	577, 635, 693
Width Over Guide Rollers	b6 mm	1275	1650
Ground Clearance Below Mast, Load	m1 mm	98	98
Ground Clearance Center Of Wheelbase, Load	m2 mm	50	50
Right Angle Stacking Aisle Width (1200x1000)	Ast mm	1270	1770
Turning Radius	Wa mm	1706	1826
Main Aisle Width	mm	≥(3280+400)	≥(3400+400)
PERFORMANCE			
Traveling Speed, Load/Unload	km/h	8/8	10/10
Lift Speed, Load/Unload	m/s	330/350	380/40
Lowering Speed, Load/Unload	m/s	350/350	400/400
Max. Gradient, Load/Unload	%	5/8	5/8
Traveling Brake		Regenerative Brake/Electromagnetic Brake	
Service Brake		Electromagnetic	Electromagnetic
DRIVE			
Drive Motor Rating (S2=60min)	kw	6,5 (AC)	6,5 (AC)
Lift Motor Rating (S3=15%)	kw	14 (AC)	14 (AC)
Battery Voltage/Nominal Capacity	V/Ah	48/400	48/600
OTHERS			
Battery Replacement Method		Side Pull	Side Pull
Steering System		Electrical Steering	Electrical Steering



DETAILS

- With a sleek design and shorter vehicle width (1070mm) for narrower rack aisles, optimizing storage density and enhancing capacity expansion.
- AC maintenance-free system: Features an AC motor for high efficiency, power, and high durability.
- Equipped with an emergency stop button and speed-limiting functions, ensuring safe operation during high-lift and turning conditions.
- Operators can lean on four secure contact points, offering safety and confidence during high-altitude tasks.
- HD display and lighting provide clear visibility in low-light environments, improving picking safety.
- Optimized travel speeds improve efficiency, accelerating picking operations and minimizing work time to help you achieve more in less time.



Mast Electric Order Picker MHA13

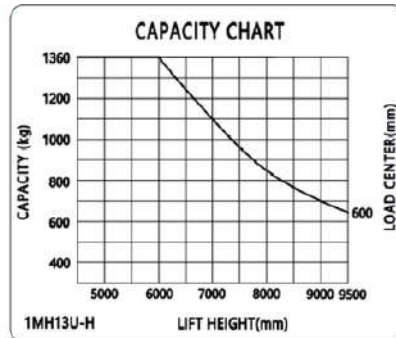
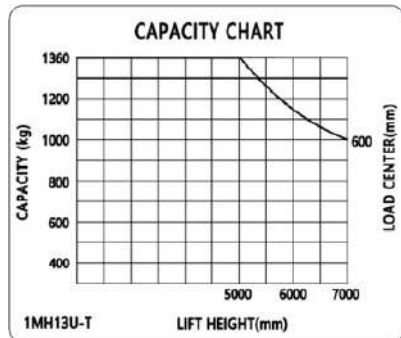
MHA13U-H

Model	MHA13-H	13-95	13-90	13-85	13-80	13-75
Lift height	h3	9500	9000	8500	8000	7500
Mast picking height	h28	11260	10760	10260	9760	9260
Mast retracted height	h1	4084	3918	3751	3584	3418
Mast extended height	h4	11750	11250	10750	10250	9750
Free lifting height	h2	1764	1589	1431	1264	1098

MHA13U-T

Model	MHA13-T	13-70	13-65	13-60	13-55	13-50
Lift height	h3	7000	6500	6000	5500	5000
Mast picking height	h28	8760	8260	7760	7260	6760
Mast retracted height	h1	3251	2988	2818	2653	2488
Mast extended height	h4	9250	8750	8250	7750	7250
Free lifting height	h2	931	668	498	333	168

Capacity Chard Electric Order Picker MHA13





Man-up Turret Truck 1,2t

MATERIAL HANDLING EQUIPMENT

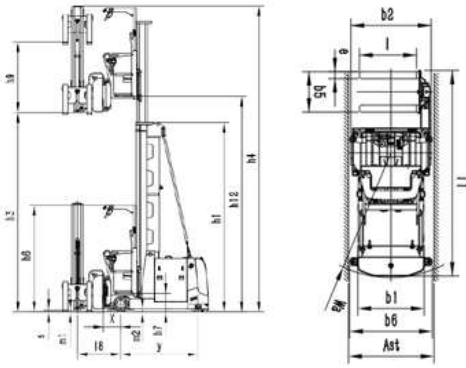
MAN-UP TURRET TRUCK
ALWAYS LIFTING ALWAYS GROWING

MODEL	UNIT	MCC12
Power Type		Battery
Operation		Stand-On/Seated
Load Capacity	kg	1200
Load Center Distance	mm	500
Stand Height	mm	435
Turning Radius	mm	2535
Lift Height Of Main Mast	mm	14000
PERFORMANCE		
Travel Speed, Load/Unload	km/h	10/10
Lift Speed, Load/Unload	mm/s	320/320
Lowering Speed, Load/Unload	mm/s	400/380
DIMENSIONS		
Telescopic Fork Stroke	mm	1000
Main Aisle Width	mm	4800
Minimum Stacking Clear Aisle Width (Pallet 1000x1000)	mm	2000
Guide Wheel Outer Distance	mm	1875
ELECTRICAL PARAMETERS		
Drive Motor Rating	kw	9,5AC
Lift Motor Rating	kw	21AC
Parking Brake Mode		Electromagnetic Braking
Driving Brake Mode		Regenerative/Electromagnetic Braking
Steering System		Electric Steering
Battery Change Method		Side Pull

[*] The above lifting height refers to overall lifting height

[*] The above load curve of MCC12H series is only applicable to specific working conditions.⁴

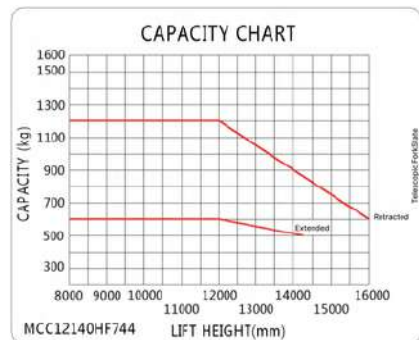
Note: Only some of the parameters are listed in this table. For details, please consult professional sales engineer.



DETAILS

- Rated load capacity of 1200kg.
- Telescopic forks for double-deep racking, increasing storage capacity
- Full-wheel electromagnetic braking ensures shorter braking distances, faster response times, and improved braking effectiveness, enhancing operational safety.
- Three emergency escape methods for safe evacuation in case of abnormal stop at height.
- Featuring a special H-shaped mast channel steel, central guide rail, and frame design, it improves visibility and enhances stability for high-level operations.
- Front-mounted secondary mast and control panel for larger picking space and better visibility.
- High-level double-deep dense storage.

Capacity Chard Man-up Turret Truck MCC12



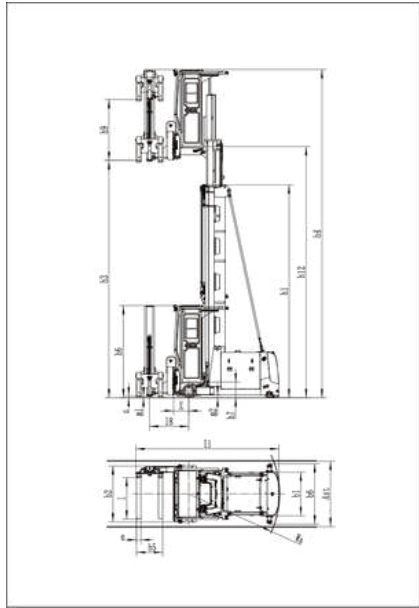
MODEL	UNIT	MCC14F80
Power Type		Battery
Operation		Stand-On/Seated
Load Capacity	kg	1400
Load Center Distance	mm	600
Overall Length (Fork 90°)	mm	3955
Overall Width	mm	1244/1502
Turning Radius	mm	2615
Service Weight (Incl.Battery)	kg	9900

PERFORMANCE		
Travel Speed, Load/Unload	km/h	10/10
Lift Speed, Load/Unload	mm/s	320/320
Lowering Speed, Load/Unload	mm/s	400/380

DIMENSIONS		
Fork Dimensions	mm	1200/125/50
Spread Fork Outside	mm	390~750
Stacking Aisle Width (Pallet 1200x1200)	mm	1650
Main Aisle Width (Pallet 1200x1200)	mm	≥(4320+400)

ELECTRICAL PARAMETERS		
Drive Motor Rating	kw	9,5AC
Lift Motor Rating	kw	21AC
Battery Voltage/Rated Capacity	V/Ah	80/700
Battery Weight	kg	1840
Steering System		Electric Steering
Battery Change Method		Side Pull

[1] The clear aisle width applies to standard models with mechanical guide rails (for models with magnetic navigation, +50mm to the clear stacking aisle width) the above data may vary depending on the operating conditions.
 [2] The main aisle width includes safety distances. For standard models with mechanical guide rails, the minimum main aisle width safety distance needs to be +400mm (models with magnetic navigation needs to be +900mm). The above data may vary depending on the pallet size.

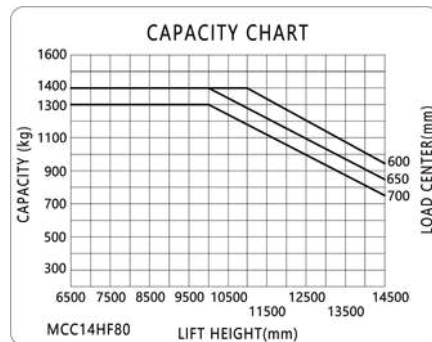


DETAILS

- The MCC14F80 is a high-performance 3-way man-up turret truck engineered specifically for cold storage environments above -25°C.
- With a 1,400kg load capacity and a maximum lift height of 14.2 meters, it delivers precise, efficient handling in temperature-sensitive, high-density storage facilities.
- The truck's 180° rotating and side-shifting forks enable seamless pallet access from both sides of narrow aisles – without turning the vehicle.
- Equipped with mechanical or electromagnetic navigation options, it offers flexibility for a range of warehouse layouts.
- Built with special cold-resistant materials and large-diameter load wheels, the MCC14F80 ensures stable performance on wet or frozen floors, helping operators maintain control and max. capacity even in challenging conditions.

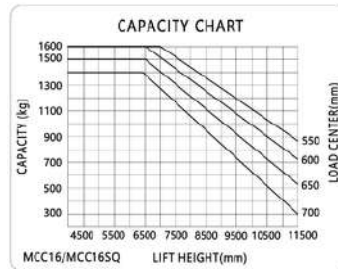
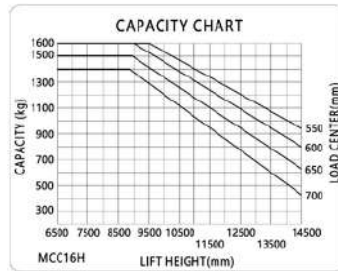
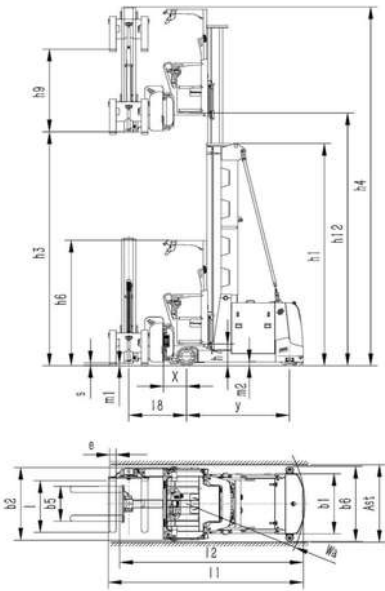
Ideal for:
Cold storage warehouses and freezer environments
High-level stacking in very narrow aisles
Operations requiring robust equipment and precise navigation in low temperatures.

Capacity Chart Man-up Turret Truck MCC12



MODEL	UNIT	MCC16	MCC16SQ	MCC16H
Power Type		Battery	Battery	Battery
Operation		Stand-On/Seated	Stand-On/Seated	Stand-On/Seated
Load Capacity	Q kg	1600	1600	1600
Load Center Distance	C mm	600	600	600
Front Overhang	x mm	435	435	435
Wheelbase	y mm	1950	2025	2250
WEIGHTS				
Service Weight (Inc. Battery)	kg	7720	8375	10430
WHEELS				
Tyre Type, Front/Rear		Polyurethane	Polyurethane	Polyurethane
Tyre Size, Front	mm	380x192	380x192	380x192
Tyre Size, Rear	mm	400x160	400x160	400x160
Wheels, Number Front/Rear (X=Driven)		2/1X	2/1X	2/1X
Track Width, Front	b11 mm	1310	1310	1310
DIMENSIONS				
Max. Reach Height	h1 mm	Refer To The Mast Specification		
Free Lift Height	h2 mm	/	350	350
Lift Height Of Main Mast	h3 mm	Refer To The Mast Specification		
Mast Extended Height	h4 mm	Refer To The Mast Specification		
Overhead Guard Height	h6 mm	2590	2590	2590
Pedal Height	h7 mm	445	445	445
Auxiliary Lift Height	h9 mm	1700	1700	1700
Lift Height Of The Station Board From The Guard	h12 mm	Refer To The Mast Specification		
Total Lift Height	h3+h9 mm	Refer To The Mast Specification		
Wheelbase	h12+1600 mm	Refer To The Mast Specification		
Overall Length (Forks 90°)	l1 mm	3690	3765	3990
Overall Length (Forks 0°, To The Vertical Surface Of The Fork)	l2 mm	3475	3550	3775
Overall Width	b1/b2 mm	1244/1502	1244/1502	1244/1652
Fork Dimensions	l/e/s mm	1200/125/50	1200/125/50	1200/125/50
Installation Level		II B	II B	II B
Fork Outside Spread	b5 mm	260~725	260~725	260~725
Side Shift Distance	mm	1300	1300	1350
Distance Between Fork Rotation Center And Front Axle Center	l8 mm	1095	D	1095
Width Over Guide Rollers	b6 mm	1550	1550	1550
Ground Clearance Below Mast	m1 mm	45		45
Ground Clearance, Center Of Wheelbase	m2 mm	80	80	80
Turning Radius	Wa mm	2235	2210	2235
Stacking Aisle Width Pallet to Pallet 1200x1200	Ast mm	1650	1650	1650
Main Aisle Width	mm	≥(4100+400)	≥(4175+400)	≥(4400+400)
PERFORMANCE				
Traveling Speed, Load/Unload	km/h	10/10	10/10	10/10
Lift Speed, Load/Unload	m/s	320/320	320/320	320/320
Lowering Speed, Load/Unload	m/s	400/380	400/380	400/380
Gradeability, Load/Unload (S2=5min)	%	5/8	5/8	5/8
Service Brake		Regenerative Brake/Hydraulic		
Parking Brake		Electromagnetic Brake		
DRIVE				
Drive Motor Rating (S2=60min)	kw	8 (AC)	8 (AC)	8 (AC)
Lift Motor Rating (S3=15%)	kw	21 (AC)	21 (AC)	21 (AC)
Battery Voltage/Nominal Capacity	V/Ah	80/560	80/560	80/700
Battery Weight	kg	1530	1530	1840
Steering System		EPS	EPS	EPS
OTHERS				
Battery Replacement Method		Side Pull	Side Pull	Side Pull

Capacity Chard Man-up Turret Truck MCC16



DETAILS

- Minimum aisle width of 1.65 meters significantly increases warehouse capacity.
- 80V full AC maintenance-free motors for quicker, precise responsiveness with low current and energy consumption.
- Driver can go up with cabin for stacking, picking, and stocktaking.
- OPS system requires driver to grip acceleration handle and step on pedal to begin operation.
- Forks rotate 180 degrees and shift laterally for easier stacking without turning in narrow aisle.
- The vehicle's mast can rotate 210 degrees, offering an ultra-small turning radius for flexible and comfortable operation, while maintaining the efficiency of traditional counterbalance forklifts
- Large-diameter load-bearing wheels with full-wheel electromagnetic brakes for shorter braking distances.

Mast Electric Order Picker MHA13

MCC16 Mast Specification (Duplex Mast)													
1.1	Model	MCC	16-45	18-50	16-55	16-60	16-65	16-70	16-75	16-80	16-85	16-90	16-95
1.2	Lift height of main mast	h3(mm)	4500	5000	5500	6000	6500	7000	7500	8000	8500	9000	9500
1.3	Total lift height	h3+h9(mm)	6200	6700	7200	7700	8200	8700	9200	9700	10200	10700	11200
1.4	Mast extended height	h4(kg)	7130	7530	8130	8630	9130	9630	10130	10630	11130	11630	12130
1.5	Mast retracted height	h1(mm)	3665	3915	4165	4415	4665	4915	5165	5415	5665	5915	6165
1.6	Max. picking height	h12+1600(mm)	6545	110	70545	8045	8545	9045	9545	10045	10545	11045	11545

MCC16 Mast Specification (Duplex Mast)													
2.1	Model	MCCSQ	16SQ-45	18SQ-50	16SQ-55	16SQ-60	16SQ-65	16SQ-70	16SQ-75	16SQ-80	16SQ-85	16SQ-90	16SQ-95
2.2	Lift height of main mast	h3(mm)	4500	5000	5500	6000	6500	7000	7500	8000	8500	9000	9500
2.3	Total lift height	h3+h9(mm)	6200	6700	7200	7700	8200	8700	9200	9700	10200	10700	11200
2.4	Mast extended height	h4(kg)	7130	7530	8130	8630	9130	9630	10130	10630	11130	11630	12130
2.5	Mast retracted height	h1(mm)	3665	3915	4165	4415	4665	4915	5165	5415	5665	5915	6165
2.6	Max. picking height	h12+1600(mm)	6545	110	70545	8045	8545	9045	9545	10045	10545	11045	11545
2.7	Free lifting height	h2(mm)	305	475	645	815	985	1155	1325	1495	1665	1835	2005

MCC16 H Mast Specification (Triplex full free mast)								
3.1	Model	MCCH	16H-100	16H-105	16H-110	16H-115	16H-120	16H-120
3.2	Lift height of main mast	h3(mm)	10000	10500	11000	11500	12000	12500
3.3	Total lift height	h3+h9(mm)	11700	12200	12700	13200	13700	14200
3.4	Mast extended height	h4(kg)	12630	13130	13630	14130	14630	15130
3.5	Mast retracted height	h1(mm)	4935	5015	5105	5375	5655	5735
3.6	Max. picking height	h12+1600(mm)	12045	12545	13045	13545	14045	14545
3.7	Free lifting height	h2(mm)	2205	2385	2565	2745	2925	3105

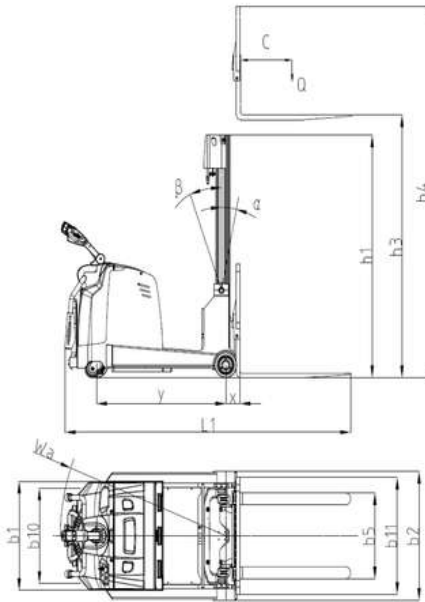


ELECTRIC PALLET STACKER

ALWAYS LIFTING ALWAYS GROWING

Electric Counterbalanced Pallet Stacker 1,6-2t MATERIAL HANDLING EQUIPMENT

MODEL	UNIT	MBB16 (Duplex Mast)	MBB16 (Triplex Full Free Mast)	MBB20 (Duplex Mast)	MBB20 (Triplex Full Free Mast)
Power Type		Battery	Battery	Battery	Battery
Operating Type		Stand On	Stand On	Stand On	Stand On
Load Capacity	Q kg	1600	1600	2000	2000
Load Center Distance	C mm	500	500	500	500
Wheelbase	y mm	1250	1250	1450	1450
WEIGHTS					
Service Weight (Inc. Battery)	kg	2300	2300	2550	2550
WHEELS					
Tyre Type, Front/Rear		PU	PU	PU	PU
Tyre Size, Front	mm	210x85	210x85	210x55	210x55
Tyre Size, Rear	mm	230x75	230x75	254x100	254x100
Caster Wheel	mm	150x50	150x50	/	/
Wheels, Number Front/Rear (X=Driven)+Caster Wheel		2/1X+2	2/1X+2	4/1X	4/1X
Track Width, Rear	b10 mm	678	678	/	/
Track Width, Front	b11 mm	967	967	906	906
DIMENSIONS					
Mast Tilt Angle Front/Rear	a/B (°)	2/5 (Mast Tilt)	2/5 (Fork Tilt)	2/5	2/5
Mast Retracted Height	h1 mm	Refer to the mast specification		Refer to the mast specification	
Free Lift Height	h2 mm	Refer to the mast specification		Refer to the mast specification	
Lift Height	h3 mm	Refer to the mast specification		Refer to the mast specification	
Mast Extended Height	h4 mm	Refer to the mast specification		Refer to the mast specification	
Overall Length	l1 mm	2765	2765	2990	2990
Overall Width	b1/b2 mm	900/1060	1340	900/≤1190	900/≤1190
Fork Dimensions	l/e/s mm	1070/100/35	1070/100/35	1070/122/40	1070/122/40
Fork Outside Spread	b5 mm	220-710	220-710	264-732	264-732
Handle Height Min./Max.	mm	1025/1445	1025/1445	1045/1465	1045/1465
Ground Clearance Below Mast	mm	70	70	80	80
Aisle Width With Pallet 1000*1200mm, C=500mm	Ast mm	2950	2950	3150	3150
Aisle Width With Pallet 800*1200mm, C=600mm	Ast mm	3070	3070	3270	3270
Turning Radius	Wa mm	1590	1590	1730	1730
PERFORMANCE					
Traveling Speed, Load/Unload	km/h	5,5/6	5,5/6	5,5/6	5,5/6
Lift Speed, Load/Unload	m/s	100/140	100/125	100/140	100/125
Lowering Speed, Load/Unload	m/s	100/95	100/95	100/95	90/95
Gradeability	%	6/10	6/10	6/10	6/10
Service Brake		Electromagnetic	Electromagnetic	Electromagnetic	Electromagnetic
DRIVING					
Drive Motor Rating (S2=60min)	kw	1,5	1,5	2,5	2,5
Lift Motor Rating (S3=15%)	kw	2	2	3	3
Battery Capacity	V/Ah	24/210	24/210	24/270	24/270
Battery Weight	kg	185	185	235	235
Steering System		EPS	EPS	Electric Steering	Electric Steering
OTHERS					
Battery Replacement Method		Hoisting	Hoisting	Side Pull	Side Pull



DETAILS

- Charger for convenient charging.
- Vertical drive motor for easy wheel replacement and maintenance.
- Integrated handle for simplicity, aesthetics, comfort, and safety.
- Power display meter for easy monitoring of remaining battery power.
- Emergency Power-Off Switch; it ensures driver and vehicle safety in emergency situations.
- Emergency Reverse Button; it prevents driver injuries during backward movement through handle-mounted emergency reverse buttons.
- AMP Waterproof Plug-in; Provides reliable circuit protection, significantly reducing electrical failures.
- The Latest AC Controller; Offers powerful, stable performance, intelligent self-diagnosis, with a low failure rate.

Mast Electric Counterbalance Pallet Stacker MBB16-20

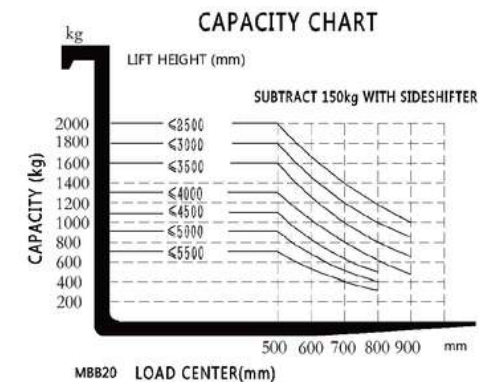
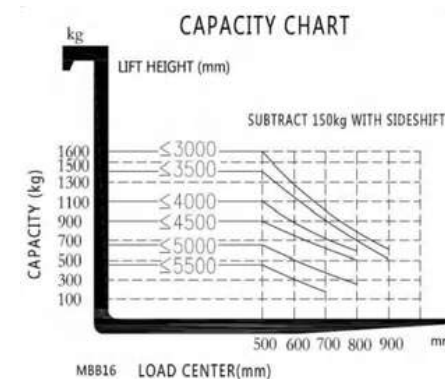
Mast Model	Single Mast			Single Cylinder And Duplex Mast		
Model	MBB16-16	MBB16-25	MBB16-30	MBB16-35	MBB16-40	MBB16-45
Mast Retracted Height	h1 mm	2090	1760	2010	2260	2560
Lifting Height	h3 mm	1600	2500	3000	3500	4500
Mast Extended Height	h4 mm	2500	3410	3910	4410	5018

Triplex Full Free Mast (With Fork Tilt)				
Model	MBB16-40	MBB16-45	MBB16-50	MBB16-55
Mast Retracted Height	h1 mm	1934	2100	2266
Lifting Height	h3 mm	4000	4500	5000
Free Lifting Height	h2 mm	989	1155	1321
Mast Extended Height	h4 mm	4935	5435	5935

Double Cylinder And Duplex Mast						
Model	MBB20-16	MBB20-25	MBB20-30	MBB20-35	MBB20-40	MBB20-45
Lifting Height	h3 mm	1600	2500	3000	3500	4500
Mast Close Height	h1 mm	2100	1770	2020	2270	2820
Mast Extended Height	h4 mm	2500	3435	3935	4435	4935

Triplex Full Free Mast				
Model	MBB20-40	MBB20-45	MBB20-50	MBB20-55
Lifting Height	h3 mm	4000	4500	5000
Mast Close Height	h1 mm	1934	2100	2266
Mast Extended Height	h4 mm	989	1155	1321

Capacity Chard Electric Counterbalance Pallet Stacker MBB16-20

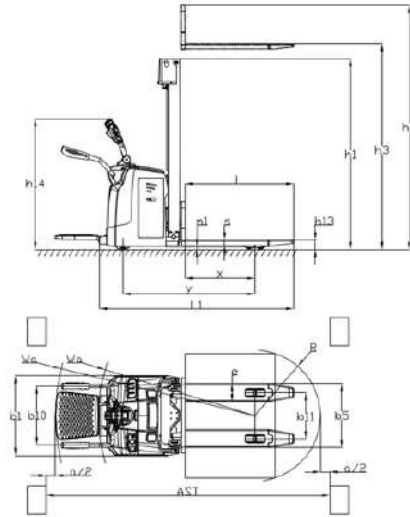


Stand-On Electric Pallet Stacker 1,5-2t MATERIAL HANDLING EQUIPMENT

MODEL	UNIT	MB1530	MB2030	MB1530	MB2030
Power Type		Battery	Battery	Battery	Battery
Operating Type		Stand On	Stand On	Stand On	Stand On
Load Capacity	Q kg	1500	2000	1500	2000
Load Center Distance	C mm	600	600	600	600
Front Overhang	x1 mm	737	737	722	722
Wheelbase	y mm	1390	1390	1390	1390
WEIGHTS					
Service Weight (Inc. Battery)	kg	1110	1115	1270	1300
Battery Weight (±5%)	kg	335	335	665	665
WHEELS					
Tyre Type, Front/Rear		PU	PU	PU	PU
Tyre Size, Front	mm	80x70	80x70	80x70	80x70
Tyre Size, Rear	mm	230x75	230x75	230x75	230x75
Caster Wheel	mm	125x50	125x50	125x50	125x50
Wheels, Number Front/Rear (X=Driven)+Caster Wheel		4/1x+2	4/1x+2	4/1x+2	4/1x+2
Track Width, Rear	b10	630/770	630/770	630/770	630/770
Track Width, Front	b11	490/380	490/380	490/380	490/380
DIMENSIONS					
Mast Retracted Height	h1 mm	Refer to the mast specification		Refer to the mast specification	
Lift Height	h3 mm	Refer to the mast specification		Refer to the mast specification	
Mast Extended Height (With Load-Backrest)	h4 mm	Refer to the mast specification		Refer to the mast specification	
Handle Height Min./Max.	h14 mm	1100/1390	1100/1390	1100/1390	1100/1390
Ground Clearance Min. Fork Surface	h13 mm	90	90	90	90
Overall Length	l1	2110	2110	2130	2130
Overall Width	b1/b2 mm	850/1000	850/1000	850/1000	850/1000
Fork Dimensions	l/e/s	1150/190/56	1150/190/56	1150/190/56	1150/190/56
Fork Outside Spread	b5 mm	680/570	680/570	680/570	680/570
Ground Clearance Below Mast	m1 mm	30	30	30	30
Aisle Width With Pallet 1000*1200mm, C=500mm	Ast mm	2490	2490	2490	2490
Aisle Width With Pallet 800*1200mm, C=600mm	Ast mm	2450	2450	2450	2450
Turning Radius	Wa mm	1655	1655	1655	1655
PERFORMANCE					
Traveling Speed, Load/Unload	km/h	5,0/6,0	5,0/6,0	5,0/6,0	5,0/6,0
Lift Speed, Load/Unload	m/s	90/130	65/110	125/175	65/100
Lowering Speed, Load/Unload	m/s	110/130	85/115	115/135	95/100
Gradeability	%	8/10	6/8	8/10	6/8
Service Brake		Electromagnetic	Electromagnetic	Electromagnetic	Electromagnetic
DRIVING					
Drive Motor Rating (S2=60min)	kw	1,5	1,5	1,5	1,5
Lift Motor Rating (S3=15%)	kw	2	2	2	2
Battery Capacity	V/Ah	24/210	24/210	24/210	24/210
Battery Weight	kg	200	200	200	200
Steering System		EPS	EPS	EPS	EPS
OTHERS					
Battery Replacement Method		Side Pull	Side Pull	Side Pull	Side Pull
Mast		Single Cylinder Duplex Mast	Single Cylinder Duplex Mast	Duplex Cylinder Duplex Mast	Duplex Cylinder Duplex Mast

Stand-On Electric Pallet Stacker 1,5-2t MATERIAL HANDLING EQUIPMENT

MODEL	UNIT	MB1545	MB2045
Power Type		Battery	Battery
Operating Type		Stand On	Stand On
Load Capacity	Q kg	1500	2000
Load Center Distance	C mm	600	600
Front Overhang	x1 mm	712	712
Wheelbase	y mm	1390	1390
WEIGHTS			
Service Weight (Inc. Battery)	kg	1450	1550
Battery Weight (±5%)	kg	665	655
WHEELS			
Tyre Type, Front/Rear		PU	PU
Tyre Size, Front	mm	80x70	80x70
Tyre Size, Rear	mm	230x75	230x75
Caster Wheel	mm	125x50	125x50
Wheels, Number Front/Rear (X=Driven)+Caster Wheel		4/1x+2	4/1x+2
Track Width, Rear	b10	630/770	630/770
Track Width, Front	b11	490/380	490/380
DIMENSIONS			
Mast Retracted Height	h1 mm	Refer to the mast specification	
Lift Height	h3 mm	Refer to the mast specification	
Mast Extended Height (With Load-Backrest)	h4 mm	Refer to the mast specification	
Handle Height Min./Max.	h14 mm	1100/1390	1100/1390
Ground Clearance Min. Fork Surface	h13 mm	90	90
Overall Length	l1	2130	2130
Overall Width	b1/b2 mm	850/1000	850/1000
Fork Dimensions	l/e/s	1150/190/56	1150/190/56
Fork Outside Spread	b5 mm	680/570	680/570
Ground Clearance Below Mast	m1 mm	30	30
Aisle Width With Pallet 1000*1200mm, C=500mm	Ast mm	2490	2490
Aisle Width With Pallet 800*1200mm, C=600mm	Ast mm	2450	2450
Turning Radius	Wa mm	1655	1655
PERFORMANCE			
Traveling Speed, Load/Unload	km/h	5,0/6,0	5,0/6,0
Lift Speed, Load/Unload	m/s	90/130	85/130
Lowering Speed, Load/Unload	m/s	95/100	95/100
Gradeability	%	8/10	6/8
Service Brake		Electromagnetic	Electromagnetic
DRIVING			
Drive Motor Rating (S2=60min)	kw	1,5	1,5
Lift Motor Rating (S3=15%)	kw	2	2
Battery Capacity	V/Ah	24/210	24/210
Battery Weight	kg	200	200
Steering System		EPS	EPS
OTHERS			
Battery Replacement Method		Side Pull	Side Pull
Mast		Duplex Cylinder Duplex Mast	Duplex Cylinder Duplex Mast



DETAILS

- The imported controller, less failure rate.
- Integrated handle, all operations can be easily completed with one hand.
- Emergency power off button.
- Waterproof plugs improves the reliability of the electrical system.
- Low center of gravity design with good stability; H-shaped mast, more solid.
- Armrest Safety Feature; When lowered, the armrest reduces vehicle speed by 30-40% while driving, enhancing operator safety.

Mast Stand-On Pallet Stacker MB15-20

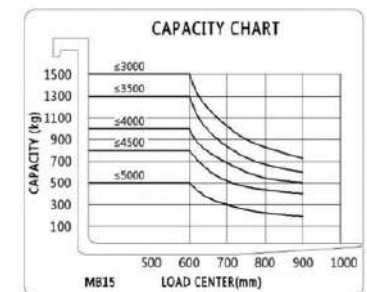
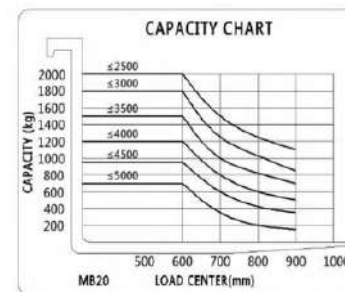
Single Mast			
Model	MB	1516	2016
Mast Retracted Height	h1 mm	2090	2090
Lifting Height	h3 mm	1600	1600
Mast Extended Height	h4 mm	2090	2090
Free Lift Height	h2 mm	1600	1600

Single Cylinder Duplex Mast						
Model	MB	1525	1530	1535	1540	1545
		2025	2030	2035	2040	2045
Mast Retracted Height	h1 mm	1775	2025	2275	2575	2825
Lifting Height	h3 mm	2500	3000	3500	4000	4500
Mast Extended Height	h4 mm	3006	3506	4006	4556	5056

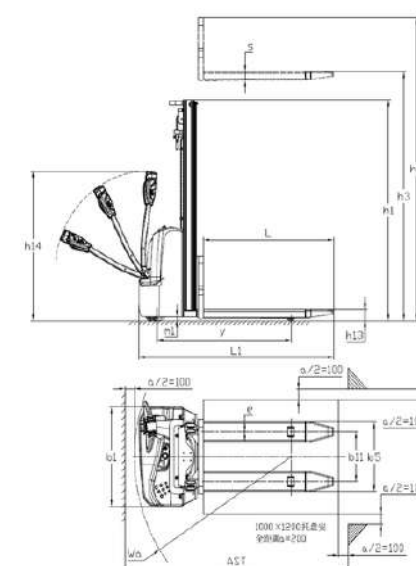
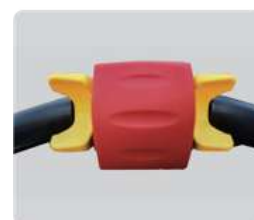
Double Cylinder Duplex Mast						
Model	MB	1525	1530	1535	1540	1545
		2025	2030	2035	2040	2045
Mast Retracted Height	h1 mm	1775	2025	2275	2575	2825
Lifting Height	h3 mm	2500	3000	3500	4000	4500
Mast Extended Height	h4 mm	3020	3520	4020	4570	5070

Double Cylinder Duplex Mast					
Model	MB	1535	1540	1545	1550
		2035	2040	2045	2050
Mast Retracted Height	h1 mm	1766	1933	2045	2267
Lifting Height	h3 mm	3500	4000	4500	5000
Mast Extended Height	h4 mm	4000	4500	5000	5500

Capacity Chard Stand-On Pallet Stacker MB15-20



MODEL	UNIT	MBD12	MBD15
Power Type		Battery	Battery
Operating Type		Walking	Walking
Load Capacity	Q kg	1200	1500
Load Center Distance	C mm	500	500
Wheelbase	y mm	1200	1200
WEIGHTS			
Service Weight (Inc. Battery)	kg	560	560
WHEELS			
Tyre Type, Front/Rear		PU	PU
Tyre Size, Front	mm	80x70	80x70
Tyre Size, Rear	mm	210x70	210x70
Caster Wheel	mm	125x50	125x50
Wheels, Number Front/Rear (X=Driven)+Caster Wheel		2/1x+1	2/1x+1
Track Width, Front	b11	400	400
DIMENSIONS			
Mast Retracted Height	h1 mm	Refer to the mast specification	
Lift Height	h3 mm	Refer to the mast specification	
Mast Extended Height	h4 mm	Refer to the mast specification	
Handle Height Min./Max.	h14 mm	800/1200	800/1200
Ground Clearance, Min. Fork Surface	h13 mm	85	85
Overall Length	l1	1750	1750
Overall Width	b1/b2 mm	800	800
Fork Dimesions	l/e/s	1150/160/60	1150/160/60
Fork Outside Spread	b5 mm	560*	560*
Ground Clearance Below Mast	m1 mm	30	30
Aisle Width With Pallet 1000*1200mm, C=500mm	Ast mm	2050	2050
Aisle Width With Pallet 800*1200mm, C=600mm	Ast mm	2100	2100
Turning Radius	Wa mm	1440	1440
PERFORMANCE			
Traveling Speed, Load/Unload	km/h	3,5/4	3,5/3,6
Lift Speed, Load/Unload	m/s	110/180	73/107
Lowering Speed, Load/Unload	m/s	130/160	85/115
Gradeability	%	3/6	3/6
Service Brake		Electromagnetic	Electromagnetic
DRIVING			
Drive Motor Rating (S2=60min)	kw	0,75	0,75
Lift Motor Rating (S3=15%)	kw	2	2
Battery Capacity	V/Ah	24/80	24/80
Battery Weight	kg	50	50
Steering System		Mechanical	Mechanical
OTHERS			
Mast		Single Cylinder Duplex Mast	Single Cylinder Duplex Mast



DETAILS

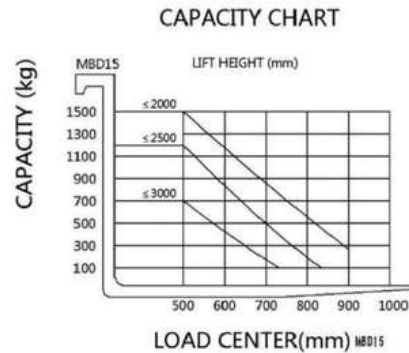
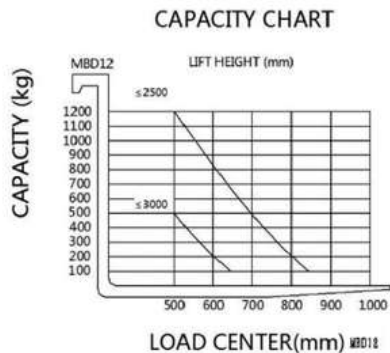
- The imported controller, less failure rate.
- Integrated handle, all operations can be easily completed with one hand.
- Emergency power off button.
- Waterproof plugs improves the reliability of the electrical system.
- Maintenance free batteries.
- Compact body with long handle design based on ergonomic standard.
- Small turning radius.
- Use imported controller, powerful, stable performance, intelligent self-diagnosis, less failure rate.

Mast Walking Pallet Stacker MBD12-15

MBD12 Single Cylinder Duplex Mast				
Model			MBD1225	MBD1230
Mast Retracted Height	h1	mm	1780	2030
Lifting Height	h3	mm	2500	3000
Mast Extended Height	h4	mm	3010	3510

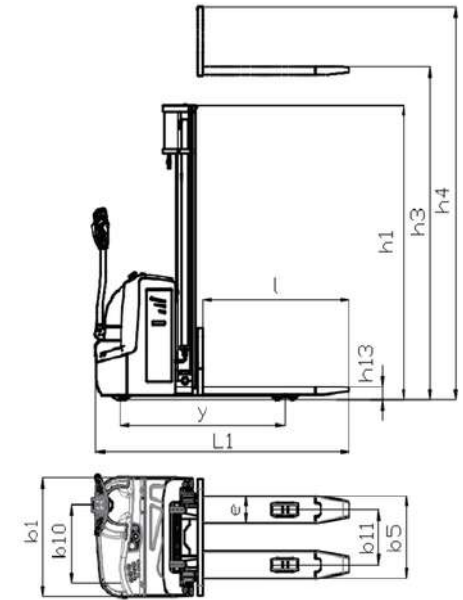
MBD15 Single Cylinder Duplex Mast				
Model			MBD1525	MBD1530
Mast Retracted Height	h1	mm	1780	2030
Lifting Height	h3	mm	2500	3000
Mast Extended Height	h4	mm	3010	3510

Capacity Chard Walking Pallet Stacker MBD12-15



MODEL	UNIT	MBC1630	MBC1630	MBC16
Power Type		Battery	Battery	Battery
Operating Type		Walking	Walking	Walking
Load Capacity	Q kg	1600	1600	1600
Load Center Distance	C mm	600	600	600
Wheelbase	y mm	1290	1290	1290
WEIGHTS				
Service Weight (Inc. Battery)	kg	1150	1200	1300
WHEELS				
Tyre Type, Front/Rear		PU	PU	PU
Tyre Size, Front	mm	80x70	80x70	80x70
Tyre Size, Rear	mm	230x75	230x75	230x75
Caster Wheel	mm	125x50	125x50	125x50
Wheels, Number Front/Rear (X=Driven)+Caster Wheel		4/1X+1	4/1X+1	4/1X+1
Track Width, Rear	b10 mm	530	530	530
Track Width, Front	b11 mm	490	490	490
DIMENSIONS				
Mast Retracted Height	h1 mm	Refer to the mast specification		
Free Lift Height	h2 mm	Refer to the mast specification		
Lift Height	h3 mm	Refer to the mast specification		
Mast Extended Height	h4 mm	Refer to the mast specification		
Handle Height Min./Max.	h14 mm	700/1300	700/1300	700/1300
Ground Clearance, Min. Fork Surface	h13 mm	90	90	90
Overall Length	l1	1990	1990	1990
Overall Width	b1/b2 mm	820	820	820
Fork Dimensions	l/e/s mm	1150/190/58	1150/190/58	1150/190/58
Fork Outside Spread	b5 mm	680	680	680
Ground Clearance Below Mast	mm	30	30	30
Aisle Width With Pallet 1000*1200mm, C=500mm	Ast mm	2375	2375	2375
Aisle Width With Pallet 800*1200mm, C=600mm	Ast mm	2375	2375	2375
Turning Radius	Wa mm	1490	1490	1490
PERFORMANCE				
Traveling Speed, Load/Unload	km/h	5,0/6,0	5,0/6,0	5,0/6,0
Lift Speed, Load/Unload	m/s	90/130	90/130	90/130
Lowering Speed, Load/Unload	m/s	110/130	110/130	110/130
Gradeability, Load/Unload (S2-5min)	%	6/12	6/12	6/12
Service Brake		Electromagnetic	Electromagnetic	Electromagnetic
DRIVING				
Drive Motor Rating (S2=60min)	kw	1,5	1,5	1,5
Lift Motor Rating (S3=15%)	kw	2	3	3
Battery Capacity	V/Ah	24/210	24/210	24/210
Battery Weight	kg	180	180	180
Steering System		Mechanical	Mechanical	Mechanical
OTHERS				
Battery Replacement Method		Side Pull	Side Pull	Side Pull
Mast		Single Cylinder Duplex Mast	Double Cylinder Duplex Mast	Triplex Mast*

MODEL	UNIT	MBC2030	MBC2030	MBC20
Power Type		Battery	Battery	Battery
Operating Type		Walking	Walking	Walking
Load Capacity	Q kg	2000	2000	2000
Load Center Distance	C mm	600	600	600
Wheelbase	y mm	1290	1290	1290
WEIGHTS				
Service Weight (Inc. Battery)	kg	1150	1200	1300
WHEELS				
Tyre Type, Front/Rear		PU	PU	PU
Tyre Size, Front	mm	80x70	80x70	80x70
Tyre Size, Rear	mm	230x75	230x75	230x75
Caster Wheel	mm	125x50	125x50	125x50
Wheels, Number Front/Rear (X=Driven)+Caster Wheel		4/1X+1	4/1X+1	4/1X+1
Track Width, Rear	b10 mm	530	530	530
Track Width, Front	b11 mm	490	490	490
DIMENSIONS				
Mast Retracted Height	h1 mm	Refer to the mast specification		
Free Lift Height	h2 mm	Refer to the mast specification		
Lift Height	h3 mm	Refer to the mast specification		
Mast Extended Height	h4 mm	Refer to the mast specification		
Handle Height Min./Max.	h14 mm	700/1300	700/1300	700/1300
Ground Clearance, Min. Fork Surface	h13 mm	90	90	90
Overall Length	l1	1990	1990	1990
Overall Width	b1/b2 mm	820	820	820
Fork Dimensions	l/e/s mm	1150/190/58	1150/190/58	1150/190/58
Fork Outside Spread	b5 mm	680	680	680
Ground Clearance Below Mast	mm	30	30	30
Aisle Width With Pallet 1000*1200mm, C=500mm	Ast mm	2375	2375	2375
Aisle Width With Pallet 800*1200mm, C=600mm	Ast mm	2375	2375	2375
Turning Radius	Wa mm	1490	1490	1490
PERFORMANCE				
Traveling Speed, Load/Unload	km/h	5,0/6,0	5,0/6,0	5,0/6,0
Lift Speed, Load/Unload	m/s	90/130	90/130	90/130
Lowering Speed, Load/Unload	m/s	110/130	110/130	110/130
Gradeability, Load/Unload (S2-5min)	%	6/12	6/12	6/12
Service Brake		Electromagnetic	Electromagnetic	Electromagnetic
DRIVING				
Drive Motor Rating (S2=60min)	kw	1,5	1,5	1,5
Lift Motor Rating (S3=15%)	kw	2	3	3
Battery Capacity	V/Ah	24/210	24/210	24/210
Battery Weight	kg	180	180	180
Steering System		Mechanical	Mechanical	Mechanical
OTHERS				
Battery Replacement Method		Side Pull	Side Pull	Side Pull
Mast		Single Cylinder Duplex Mast	Double Cylinder Duplex Mast	Triplex Mast*



DETAILS

- Easy to operate battery charging plug.
- Vertical drive motor for simple wheel maintenance.
- Integrated handle for comfort and safety.
- Power display meter for monitoring battery levels.
- Anti-pressure foot design; Rear panel is adapted big carved stamping parts, with anti-pressure foot design.
- Emergency power-off switch, it can be used in emergency situations to ensure the safety of the driver and the vehicle.
- Side pull battery allows for easy and quick battery replacement (standard).
- Small turning radius; it can work smoothly in 2375mm narrow aisle.

Mast Walking Pallet Stacker MBC16-20

Single Mast

Model	MCB16/20-16		
Lifting Height	h3 mm	1600	
Mast Retracted Height	h4 mm	2090	
Mast Extended Height	h1 mm	2090	
Free Lift Height	h2 mm	1600	

Single Cylinder Duplex Mast

Model		MCB16/20-25	MCB16/20-30	MCB16/20-35	MCB16/20-40	MCB16/20-45
Lifting Height	h3 mm	2500	3000	3500	4000	4500
Mast Retracted Height	h1 mm	1775	2025	2275	2575	2825
Mast Extended Height	h4 mm	3000	3500	4000	4500	5000

Double Cylinder Duplex Mast

Model		MCB16/20-25	MCB16/20-30	MCB16/20-35	MCB16/20-40	MCB16/20-45
Lifting Height	h3 mm	2500	3000	3500	4000	4500
Mast Retracted Height	h1 mm	1775	2025	2275	2575	2825
Mast Extended Height	h4 mm	3000	3500	4000	4500	5000

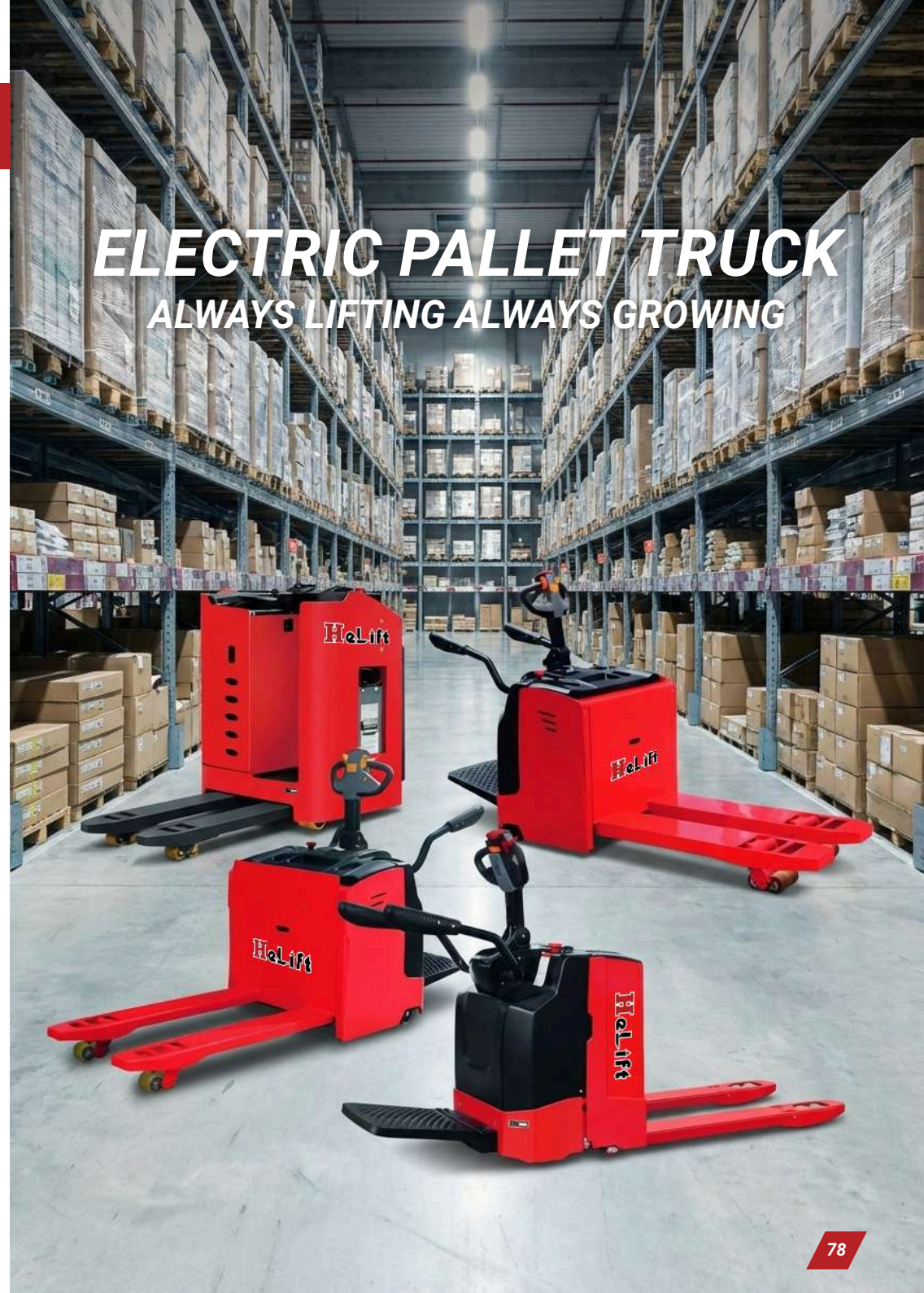
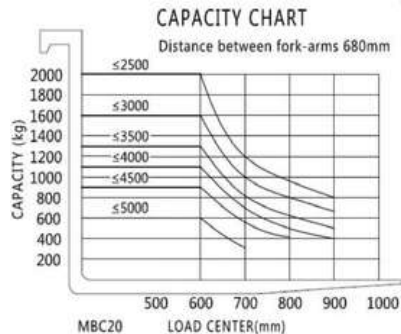
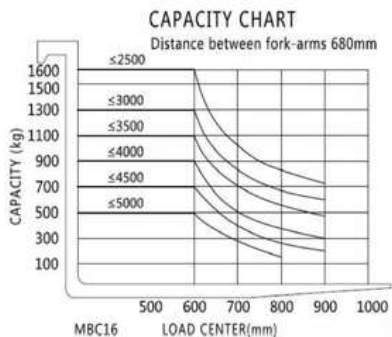
Double Cylinder Duplex Mast

Model		MCB16/20-40	MCB16/20-45	MCB16/20-50
Lifting Height	h3 mm	4000	4500	5000
Mast Retracted Height	h1 mm	1933	2100	2267
Mast Extended Height	h4 mm	4500	5000	5500

Single Mast

Model		MCB16/20-40	MCB16/20-45	MCB16/20-50
Lifting Height	h3 mm	4000	4500	5000
Mast Retracted Height	h4 mm	1933	2100	2267
Mast Extended Height	h1 mm	1383	1550	1717
Free Lift Height	h2 mm	4500	5000	5500

Capacity Chart Walking Pallet Stacker MBC16-20

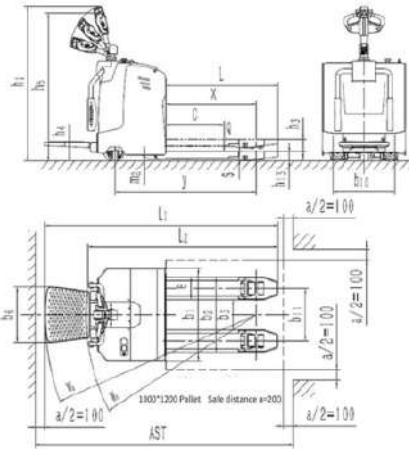


Electric Pallet Truck 2-2,5t MATERIAL HANDLING EQUIPMENT

MODEL	Unit	ME20	ME25
Power Type		Battery	Battery
Operation		Stand on	Stand on
Load Capacity	Q kg	2000	2500
Load Center Distance	C mm	600	600
Front Overhang	x mm	865	865
Wheelbase	y mm	1345	1345
WEIGHTS			
Service Weight (Incl. Battery)	kg	630	630
WHEELS			
Tyre Type, Front/Rear		PU	PU
Tyre Size, Front	mm	80×70	80×110
Tyre Size, Rear	mm	230×75	230×75
Caster Wheel	mm	125×50	125×50
Wheels, Number/Rear(X=Driven) + Caster Wheel		4/1X+2	4/1X+2
Track Width, Rear	b10	476	476
Track Width, Front	b11	510	510
DIMENSIONS			
Overall Height	h1	1430	1430
Fork Lift Height	h3	115	115
Lift Height	h13+h3	200	200
Ground Clearance, Min. Fork Surface	h13	85	85
Pedal Height	h4	155	155
Handle Height	h4	1080~1340	1080~1340
Overall Length, Pedal Off/On	l1	1900/2310	1900/2310
Overall Width	b1	730	730
Fork Outside Spread	b2	680	680
Fork Dimensions	l/e/s	1150/170/56	1150/170/56
Ground Clearance, Body	m2	35	35
Aisle Width With Pallet 1000*1200mm, C=500mm (With Pedal Folded)	Ast	2050/2500	2050/2500
Aisle Width With Pallet 800*1200mm, C=600mm (With Pedal Folded)	Ast	2100/2550	2100/2550
Turning Radius (Pedal Folded/Unfolded)	Wa	1730/2065	1730/2065
PERFORMANCE			
Travelling Speed, Load/Unload	km/h	6/6	6/6
Lift Speed, Load/Unload	mm/s	40/55	40/55
Lowering Speed, Load/Unload	mm/s	35/35	35/35
Gradeability, Load/Unload (S2-5min)	%	6/15	6/15
Service Brake		Electromagnetic	Electromagnetic
DRIVING			
Drive Motor Rating (S2=60 min)	kw	1.5(AC)	1.3(AC)
Lift Motor Rating (S3=15%)	kw	2.2(DC)	2.2(DC)
Battery Voltage/Nominal Capacity	V/Ah	24/210	24/270
Battery Weight	kg	200	240
Steering System		EPS	EPS
OTHERS			
Battery Replacement Method		Hoisting	Hoisting

Electric Pallet Truck 3-6t MATERIAL HANDLING EQUIPMENT

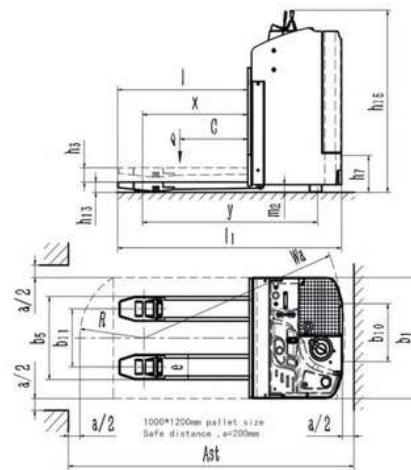
MODEL	Unit	ME30	ME40	ME60
Power Type		Battery	Battery	Battery
Operation		Stand on	Stand on	Stand on
Load Capacity	Q kg	3000	4000	6000
Load Center Distance	C mm	600	600	600
Front Overhang	x mm	985/910	930/855	980/935
Wheelbase	y mm	1515/1440	1460/1385	1525/1480
WEIGHTS				
Service Weight (Incl. Battery)	kg	810	950	1480
Axle Loading, Load Rear/ Front	kg	1460/2400	1600/3300	/
Axle Loading, Unload Rear/Front	kg	700/160	720/180	/
WHEELS				
Tyre Type, Front/Rear		PU	PU	PU
Tyre Size, Front	mm	80×70	80×110	90×80
Tyre Size, Rear	mm	230×75	230×75	254×100
Caster Wheel	mm	150×50	150×50	125×50
Wheels, Number/Rear(X=Driven) + Caster Wheel		4/1X+2	4/1X+2	8/1X+4
Track Width, Rear	b10 mm	630	630	630
Track Width, Front	b11 mm	510	480	460
DIMENSIONS				
Overall Height	h1 mm	1420	1420	1420
Fork Lift Height	h2 mm	110	115	110
Lift Height	mm	195	200	205
Ground Clearance, Min. Fork Surface	h3 mm	85	85	95
Pedal Height	h4 mm	180	180	180
Handle Height	h5 mm	1090~1360	1090~1360	1090~1360
Overall Length, Pedal Off/On	l1 mm	1090~1360	1945/2390	1945/2390
Overall Width	b1 mm	850	850	850
Fork Outside Spread	b2 mm	685	685	715
Fork Dimensions	l/e/s mm	1150/175/75	1150/205/75	1200/255/87
Ground Clearance, Body	m2 mm	55	55	55
Aisle Width With Pallet 1000*1200mm, C=500mm (With Pedal Folded)	Ast mm	2150/2590	2150/2590	2250/2690
Aisle Width With Pallet 800*1200mm, C=600mm (With Pedal Folded)	Ast mm	2200/2640	2200/2640	2300/2740
Turning Radius (Pedal Folded/Unfolded)	Wa mm	1800/2220	1750/2170	1900/2320
PERFORMANCE				
Travelling Speed, Load/Unload	km/h	5/6	5/6	4,0/4,5
Lift Speed, Load/Unload	mm/s	29/33	23/33	29/35
Lowering Speed, Load/Unload	mm/s	23/18	25/18	29/19
Gradeability, Load/Unload (S2-5min)	%	5/8	5/8	4/8
Service Brake		Electromagnetic	Electromagnetic	Electromagnetic
DRIVING				
Drive Motor Rating (S2=60 min)	kw	1.5(AC)	1.3(AC)	2.5(AC)
Lift Motor Rating (S3=15%)	kw	2.2(DC)	2.2(DC)	3.0(DC)
Battery Voltage/Nominal Capacity	V/Ah	24/210	24/270	24/270
Battery Weight	kg	200	240	240
Steering System		EPS	EPS	EPS
OTHERS				
Battery Replacement Method		Hoisting	Hoisting	Hoisting



DETAILS

- With armrest safety function, when put down armrest, travelling speed will decrease by 30-40%, which increases safety of the operator.
- Ergonomic shock-absorbing pedals.
- Emergency reverse driving function to protect driver safety.
- Emergency stop switch is used to quickly cut off the power supply in an emergency to ensure operator safety.
- 5-pivots structure and balance wheel linkage system which improves the stability, adaptability and durability.
- The mechanical material structure is solid, key parts are made of high-strength steel plates, which are sturdy and durable.

MODEL	Unit	ME36	ME36 (Double Pallets Mobile)
Power Type		Battery (electric assist)	Battery (electric assist)
Driving Type		Pedal	Pedal
Rated Load	Q kg	3630	3630
Load Center	C mm	610	1220
WHEELS			
Drive Wheel (Diameter x Width)	mm	PU 310×110	PU 310×110
Auxiliary Wheel (Diameter x Width)	mm	PU 100×40	PU 100×40
Load Wheel (Diameter x Width)	mm	PU 82.5×165	PU 82.5×165
Tyre Number Drive Wheel/ Auxiliary Wheel/ Load Wheel)		1/2/2	1/2/2
Track Width, Drive	b10 mm	712	712
Track Width, Load	b11 mm	454	454
DIMENSIONS			
Overall Height	h14 max mm	1095	1095
Overall Height	h14 min mm	1530	1530
Lift height	h2 mm	140	140
Ground clearance, Min fork surface	h3 mm	82.5	82.5
Overall Length	l1 mm	2372	3590
Overall Width	b1 mm	935	935
Fork Outside Spread	b2 mm	686	686
Fork Dimensions	l/e/s mm	1215/232/62	2435/232/62
Ground Clearance, Body	m2 mm	132	132
Turning Radius	Wa mm	2130	2505
Aisle Width with Pallet	Ast mm	2586	3787
PERFORMANCE			
Driving Speed (unload)	kph	12	12
Driving Speed(load)	kph	10	10
Gradeability, unload(S2-5min)	%	15	15
Gradeability, load(S2-5min)	%	5	5
DRIVING			
Driving Motor (S2-60min)	Kw	3,5	3,5
Lifting motor (S3-15%)	Kw	2,2	2,2
Steering Motor	Kw	0,4	0,4
Lead Acid Battery Voltage	V/Ah	24/300	24/300



DETAILS

- Steering wheel operation makes operation more convenient.
- Hydraulic valve operating lever makes operation more flexible and easier.
- Emergency stop switch is used to quickly cut off the power supply in an emergency to ensure operator safety.
- Multi-function instrument can real-time display of battery power and usage time.
- Side pull battery design for easy battery replacement .



ALWAYS LIFTING
ALWAYS GROWING

CONTACT US

HELIFT - PT. HASTA KARYA ANANTA

Jl. Benteng Betawi, RT.001/RW.015, Tanah Tinggi Kec. Tangerang,
Kota Tangerang, Banten 15119, Indonesia.

Tel: +62 21-2986-0544, 45

Email: manlift@hka.co.id

Website: www.manlift.co.id